



DELAWARE  
**SHAKESPEARE**  
SUMMER FESTIVAL 2023

The top half of the poster features four stylized hands in purple, blue, red, and teal reaching towards a central yellow crown. The background is a textured grey.



# MACBETH

The bottom half of the poster shows the silhouettes of three people in a dark setting, with their hands raised in the air. They are positioned in front of a bright, rectangular light source that creates a strong backlight effect.

**JULY 21-AUG. 6, 2023**

**ROCKWOOD PARK**  
WILMINGTON, DELAWARE



Presented by:  
**BANK OF AMERICA**

**2023-2024 SEASON  
PACKAGES NOW ON SALE!**



OCTOBER 13-15, 2023



MARCH 7-10, 2024



APRIL 19-21, 2024



MAY 9-12, 2024



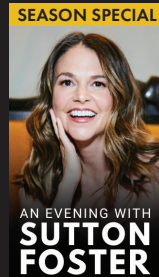
OCT 28



NOV 17-19



JAN 5-7



MAR 2



MAY 19

**The PLAYHOUSE** *on Rodney Square*  
**BroadwayInWilmington.org | 302.888.0200**

Season  
Support:

Delaware Division of the **Arts**

This program is supported, in part, by a grant from the Delaware Division of the Arts, a state agency, in partnership with the National Endowment for the Arts. The Division promotes Delaware arts events on [www.DelawareScene.com](http://www.DelawareScene.com).

**“If you can look into the seeds of time,  
and say which grain will grow and which will not.”**

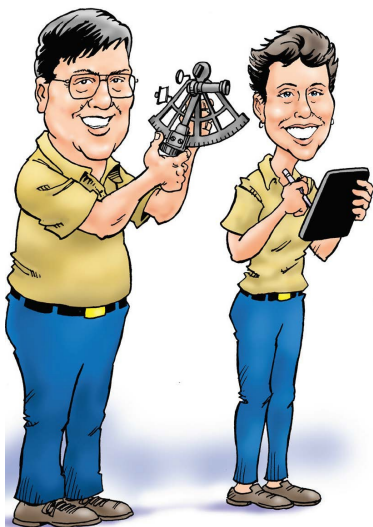
*Macbeth, Act 1 Scene 3*



# **BOWEN ASSET MANAGEMENT LLC**

*Honesty, Integrity & Transparency*

*Guiding you through life's financial transitions.*



## ***We Offer***

- Investment Management
- Financial and Investment Planning
- 529 College Planning
- Trust Planning and Management
- Retirement Management and Consulting Services
- 401(k) Evaluation
- Estate Evaluation and Management
- Special Needs Trust Management
- Family Office Services

*Bowen Asset Management LLC is an Independent Fee Only based Registered Investment Adviser. This is not an offer of services. Bowen Asset Management LLC may only transact business in those states in which it is registered or qualifies for an exemption or exclusion from registration requirements.*

**www.bowenasset.com 913 Roundelay Lane, West Chester, PA 19382 610.793.1001 info@bowenasset.com**





# The Rossettis

Revolution, partnership, love.

The major international exhibition of an iconic family  
of artists comes to Delaware October 21.

[delart.org/rossettis](http://delart.org/rossettis)

**DEL** delaware  
**ART** art  
**museum**

*The Rossettis* was organized by the Delaware Art Museum in partnership with Tate Britain and is made possible through support from the Nathan M. Clark Foundation, the Amy P. Goldman Foundation, the Delaware Art Museum Council, and the Dr. Lee MacCormick Edwards Charitable Foundation. This exhibition is supported, in part, by the National Endowment for the Arts and by a grant from the Delaware Division of the Arts, a state agency, in partnership with the National Endowment for the Arts. The Division promotes Delaware arts events on [www.DelawareScene.com](http://www.DelawareScene.com). Image: *La Ghirlandata* (detail), 1873, Dante Gabriel Rossetti. Oil on canvas. Gullichall Art Gallery. Photo credit: City of London Corporation.





# MACBETH

By William Shakespeare  
Directed by AZ Espinoza

**Marie Laster\***  
Scenic Designer

**Anna Sorrentino**  
Costume Designer

**Michael Hahn**  
Sound Designer/Composer

**Calvin Anderson\***  
Lighting Designer

**J. Bean Schwab**  
Properties Designer

**Emmanuel “Manny” Chacon**  
Choreographer

**Cassandra Alexander**  
Text Coach

**Abby Toll**  
Stage Manager

**Abby Weissman**  
Intimacy Choreographer

**Marisa Gittelman**  
Production Manager



\*The design appears courtesy of United Scenic Artists, Local USA 829 of the IATSE, the union representing Scenic, Costume, Lighting, Sound and Projection Designers in Live Performance.

# Summer Festival Sponsors and Partners



## Honorary Producer - Artist Level

Susan and Joseph Guariano



Delaware Shakespeare is supported, in part, by a grant from the Delaware Division of the Arts, a state agency, in partnership with the National Endowment for the Arts. The Division promotes Delaware arts events on DelawareScene.com.



Partnering with New Castle County  
Matthew S. Meyer, County Executive



This project is supported in part by an American Rescue Plan Act grant from the National Endowment for the Arts to support general operating expenses in response to the COVID-19 pandemic. To find out more about how National Endowment for the Arts grants impact individuals and communities, visit [arts.gov](https://www.arts.gov).

# Cast List (in alphabetical order)

---

Macduff	Tyler S. Elliott
Lady Macbeth	Ciera Gardner
Macbeth	Mariah Ghant
Witch	CJ Higgins
Fleance/Young Siward	Oliver Chase Marten
Witch	Kimie Muroya 室屋季美恵
Witch	Rachel O'Hanlon-Rodriguez
Duncan/Hecate	Katherine Perry
Steward	Juptej Singh
Banquo	Zach Valdez
Malcolm/Murderer	Eliza Waterman
Ross/Murderer	Jameka Monet Wilson

## Understudies

Oliver Chase Marten (Witches - Muroya & O'Hanlon-Rodriguez), Imani Moss (Macbeth), Natajia Sconiers (Lady Macbeth), Liam Sibbers (Fleance/Young Siward, Steward), Juptej Singh (Banquo), Talia Speak (Malcolm/Murderer, Ross/Murderer), Eliza Waterman (Macduff, Witch - Higgins), Jameka Monet Wilson (Duncan/Hecate)

## Community Care Liaison

Newton Buchanan

## Dance Captain

Oliver Chase Marten

## Fight Captain

Kimie Muroya 室屋季美恵



# WIN A DEL SHAKES T-SHIRT!



SCAN HERE



Complete the survey at  
**[delshakes.org/tshirt](https://delshakes.org/tshirt)** for a  
chance to win.

# From the Director

---

Welcome to our world of *Macbeth* - we are so happy you are here. The beauty of producing Shakespeare in a world of other options is that it can be the ultimate “Yes, And ...” This classic adage of improvisation encourages us to affirm what we find existing all around us, AND to take up space with our own inherent curiosity, wisdom, argument, or wish. Despite the fact that most theatre practitioners refuse to utter the name of this play inside a performance space (the curse is real, look it up!), the Scottish play is the consummate conversation starter ... Yes! There are witches. Yes! There is blood. Yes! There is ambition and avarice.

Now for our Yes, And...

Yes, there are witches, AND they are more than they appear. The witches in our world that we are sharing with you today are powerful, all seeing, mischievous, and wise. They enjoy chaos as a tool of learning, and they lean into the power of the natural world to seek balance and to remind us that we have more to learn from making choices than passively accepting fate.

Yes, there is blood, AND violence plays an essential role in understanding the stakes for our characters and the desperation with which they pursue their goals. We are also a collective of artists who represent the Global Majority and the full spectrum of LGBTQIA experiences, and we know that in 2023 we have more to learn from exploring the intentions that result in violence and the consequences wrought by those irreversible moments, than we do from painstakingly depicting violence on stage. You can still expect to gasp, to squeal, to feel the adrenaline of a gut punching moment on stage, but it might not look the way you expect. Like I said, things are more than they appear.

Yes, these are characters plagued by ambition and avarice, AND we're curious about the role institutions play in adding fuel to that dangerous fire. Yes, Macbeth has an itch for power that he can't stop scratching AND Scotland has a system of power that makes just about any king feel they need to watch their back.

We hope you enjoy this evening of our YESes and we hope you feel encouraged to lean in and discover your ANDs.

- AZ Espinoza



Kalmar Nyckel Foundation



Park Cafe



Brandywine Zoo



Wilmington Brew Works

## MONEY SAVING OFFERS, JUST A TAP AWAY

Exploring Wilmington & the Brandywine Valley just got even better! Whether you are a visitor discovering the grand estates of the du Pont family, or you are a local taking in our sizzling dining scene, you'll love saving money with the **Wilmington & Brandywine Valley Discount Pass**. It's FREE, easy to use, and your coupons are as close as your mobile phone. Nothing to download, as easy as a text message - get yours today!

**Over 35 Offers Available!**



Download the  
free Wilmington &  
Brandywine Valley  
Discount Pass.

Find more at: [VisitWilmingtonDE.com](http://VisitWilmingtonDE.com)





# Synopsis

On a barren Scottish heath, three witches await the coming of Macbeth and Banquo, Scottish generals on their way home after a victorious battle. At the same time, on a battlefield not far away, a wounded soldier tells Duncan, king of Scotland, of Macbeth's great courage in battle, then the thane of Ross arrives to inform the king of the traitorous actions of the thane of Cawdor. The king immediately sentences the thane of Cawdor to death and confers that title upon Macbeth, sending Ross to tell Macbeth of the new honor.

When Macbeth and Banquo arrive at the eerie site of the witches, the three prophesy that Macbeth (still uninformed of his new title) shall become the thane of Cawdor and later on shall be king, while Banquo shall be the father of kings although not one himself. When the thane of Ross arrives and addresses Macbeth

with the new title, the witches' prophecies already seem to be coming true, and Macbeth begins to wonder if the kingship could really be within his reach. However, when he reports to King Duncan, the king announces two intentions: first, of visiting Macbeth's castle in gratitude of his valor and, second, of making his son Malcolm heir to his throne.

The scene switches to Macbeth's castle, where his wife, Lady Macbeth, is reading a letter from her husband detailing the witches' prophecies and their accuracy thus far. She sets her sights on becoming queen and plans to murder the king when he visits her home; she calls on supernatural powers to help her spur Macbeth to action.

That evening, while the king sleeps in his home, Macbeth, with his wife's urging and



**QUALITY**

For more than 60 years, we've maintained the highest quality foods, and superb customer service. Whether you're looking for gourmet or everyday, stop by our store to look!

**JANSSEN'S**  
market  
SINCE 1952

**WWW.JANSSENSMARKET.COM**  
3801 KENNETT PIKE, GREENVILLE, DE | 302.654.9941

assistance, carries out the act, murdering King Duncan in his bed. The king's son, Malcolm, flees the country, and Macbeth is crowned king of Scotland. But he is fearful that Macduff, a noble suspicious of Macbeth's quick rise to power, will take matters into his own hands and haunted by the prediction that Banquo's children are to inherit the throne. Therefore, Macbeth brutally arranges for the murder of Banquo and his only child, Fleance; however, Fleance escapes the attack. Macbeth gives a great dinner for the court and is about to take his seat when he sees the ghost of Banquo (invisible to the guests), and his frenzied and incriminating remarks break up the feast.

Macbeth goes now to consult the witches. They warn him to beware of Macduff. However, they also assure him, much to his comfort, that no man born of a woman can harm him and that he cannot be defeated until Birnam Wood, a medieval forest, comes to Dunsinane, the site of Macbeth's castle. After this he is greeted with the news that Macduff has fled to England, whereupon Macbeth, in increasing paranoia orders the murder of Lady Macduff and her children.

Lady Macbeth, realizing failure is imminent, begins to lose her mind and dies mysteriously.

Malcolm and Macduff, gathering forces in England, lead an army against Macbeth's castle at Dunsinane, the soldiers covering their advance with branches cut from the trees of Birnam Wood, making it appear that Birnam Wood is coming to Dunsinane. Macbeth's nerves are shaken as he recalls the witches' prophecies, but he still clings to their saying that he cannot be harmed by any man born of woman. However, the castle is attacked and during his final conflict with Macduff, Macbeth learns that his opponent was "from his mother's womb untimely ripp'd" due to a Caesarean birth. Macbeth realizes he is doomed but, rather than being captured alive, fights to the death. Macduff kills him, cuts off his head, and announces Malcolm, king of Scotland.

Courtesy of Utah Shakespeare Festival

## WIN A DEL SHAKES T-SHIRT!



Complete the survey at  
**[delshakes.org/tshirt](http://delshakes.org/tshirt)** for a  
chance to win.



# The Cast



**Tyler S. Elliott** (Macduff) is honored to be making his second appearance with Delaware Shakespeare. Select theatre credits include, recently: *The*

*Tempest* (Del Shakes), *Romeo and Juliet*, *Twelfth Night* (Lantern Theater Company), *The Weir*, *Cowboy v. Samurai* (Hedgerow Theatre Company), *Diary of Anne Frank*; *Dot* (People's Light). He would like to thank his parents for their love and support and Del Shakes for their commitment to community and accessibility in the arts.



**Ciera Gardner** (Lady Macbeth) (they/ them) is a local actor, mover, and collaborator in Philadelphia and surrounding areas. They graduated from

the University of the Arts '16 while also attending the Headlong Performance Institute '15. Credits include *Red Riding Hood* (Arden Theatre), *Peer Gynt* (Enchantment Theatre), *Wine in the Wilderness* (Philadelphia Artists' Collective), *Richard III* (Theatre in the X), *Peter and the Starcatcher* (Theatre Horizon), *The Gap* (Azuka Theatre), *Coriolanus* (Shakespeare in Clark Park), *Liberty to Go to See* (National Trust of Cliveden), *No Child...* (Theatre in the X).



**Mariah Ghant** (Macbeth) (she/hers) is out-of-her-mind excited to be performing the role of Macbeth in her first Summer Festival! Most recently

Mariah was seen in *A Midsummer Night's Dream* as Titania and Hippolyta at Rodney Square, as well as directing/performing for various Del Shakes' programming and events as a member of their Artistic Squad. Mariah is the Artistic Associate

for the Wilma Theater, a former Arden Apprentice, a member of Theatre Contra, and an improviser with ComedySportz Philly. Learn more about her at [mariahghant.com](http://mariahghant.com). Many thanks to the Mama and all her friends who supported her on this journey!



**CJ Higgins** (Witch) (they/them) is a Philly-local artist with a focus on radical empathy and queer liberation. Performance credits include *A*

*Midsummer Night's Dream* (Puck/ Philostrate), *[title of show]* (Sue), *The Importance of Being Earnest* (Algernon Moncrieff), and *Ghost Quartet* (Pearl). CJ is also the Operations & Programs Coordinator for Theatre Philadelphia and a content creator for the It Gets Better Project. They are so thrilled to make their debut with Del Shakes! Much love and gratitude to the cast, crew, CJ's family (given and chosen), and their partners: Travis, Angie, and Linden.

## LABWARE

**lims** and **eln** in a single platform  
Automation software for all laboratories



Offices worldwide supporting customers in more than 125 countries  
[www.labware.com](http://www.labware.com)





**Oliver Chase Marten**  
(Fleance/Young  
Siward, Dance  
Captain, College  
Apprentice) (he/him/  
his) is a current BFA  
Acting senior at the

University of the Arts in Philly. He is one of the acting apprentices here at Del Shakes and is absolutely ecstatic to be in *Macbeth*. This fall, he will be playing Peter Quince in *Midsummer* at UArts (directed by Krista Apple, a former Del Shakes director)! He'd like to thank his family, friends, and partner! Follow him on instagram! @oliverxchase.



**Kimie Muroya**  
室屋季美恵  
(Witch, Fight  
Captain) (she/her) is  
delighted to return to  
Del Shakes, where she

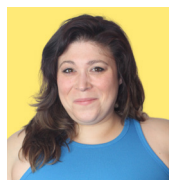
was last seen on the mainstage as an apprentice in 2014's *The Taming of the Shrew*. She is a Philadelphia-based actor, a founding member of Philadelphia Asian Performing Artists and has performed regionally with such theatres as Tiny Dynamite, Philadelphia Artists' Collective, Quintessence Theatre Group, InterAct Theatre Company, Theatre Exile, and more. Upcoming: a season-long Resident Actor Candidacy with Bloomsburg Theatre Ensemble! Thanks to Mom, Ootosan (父), Mikito, and Kayla for all their love and support! Website: [kimiemuroya.com](http://kimiemuroya.com). Instagram: @kimie.muroya. As always, Black Lives MATTER.



**Rachel O'Hanlon-Rodriguez**  
(Witch/Porter) (she/  
they) is a Philly based  
multidisciplinary  
performance-based  
artist, organizer,

non-profit arts administrator, and trauma informed teaching artist and facilitator.

Rachel's creative work explores generational cycles, boundaries, borders and liberation through poetry and performance. She spent a decade working throughout the Philadelphia region as a theater artist working with companies such as Die Cast, The Wilma Theater, and the Bearded Ladies. They serve as the Operations Associate for Spiral Q who uses the power of art to connect people, neighborhoods, and movements to their collective creative force for change. Rachel's solo show, *She Was a Conquistawhore*, will debut this Fall in Philadelphia's Cannonball Festival. Follow Rachel's creative journey on Instagram @the.inter.section or at [www.rachelohanlonrodriguez.com](http://www.rachelohanlonrodriguez.com).



**Katherine Perry**  
(Duncan/Hecate)  
(they/she) is an actor,  
educator, and creative  
engine whose work  
celebrates the creativity  
in every body and the

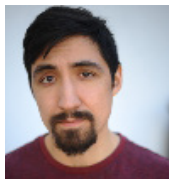
storyteller at all stages. Previous collaborations include Boston Playwrights' Theatre, Quintessence Theatre Group, Arden Theatre Company, Theatre Horizon, and Revolution Shakespeare, with several new works and world premieres. Katherine teaches in classrooms across the Philadelphia area with 1812 Productions, The Unscripted Project, Philadelphia Young Playwrights, Delaware Shakespeare, and HMS School for Cerebral Palsy. They are also the creator/performer behind Brooke Spitz and SEX TALK (the show). Katherine lives, works, and creates on unceded Lenapehoking.

[www.katherine-perry.com](http://www.katherine-perry.com) @iamkaypear



**Juptej Singh**  
(Steward, College  
Apprentice) is a rising  
senior at Rown  
University. He is  
currently majoring in  
Theatre with concen-  
trations in Acting and Pre-Teaching, and is

minoring in Political Science. His previous notable credits include: Balthazar (*Our Lady of 121st Street*), Billy Theebles (*A Feminine Ending*), and Male Greek Chorus (*How I Learned to Drive*). He is incredibly grateful for the opportunity to be performing the great works of Shakespeare (for the first time!) alongside such a hardworking team.



**Zach Valdez** (Banquo) is grateful to be making his debut with Del Shakes. He has worked in Philly at theatres such as Theatre Exile, Lantern

Theater Company, and Arden Theatre Company. Texas credits include *The Tempest*, and *Quixote* with Shakespeare Dallas. Love to Mom and Dad!



**Eliza Waterman** (Malcolm/Murderer, College Apprentice) is a Philadelphia-based actor and theatre artist thrilled to make her Delaware Shakespeare

debut. She is a recent graduate from Bryn Mawr College, where she collaborated on productions including *Romeo and Juliet: Essentialized* (Romeo), *Gruesome Playground Injuries* (Kayleen), and *Hamlet* (Polonius). Since graduating, she has had the opportunity to work with theatre companies including Theatre Horizon, Arden Theatre Company, and Allen's Lane Theater. All the love and gratitude for her family and friends.



**Jameka Monet Wilson** (Ross/Murderer, College Apprentice) is a Philadelphia-based actress, poet, and tastemaker. They are excited to be making

their professional debut with Del Shakes! Recent productions include *Hamlet*,

*Everybody, Sometimes the Rain, Sometimes the Sea* (University of the Arts); *Your Name Is a Song* (Hakaawati Storytelling Collective). They would like to extend special thanks to their faculty and mentors from the University of The Arts for empowering them with brilliant training as well as to their family and friends for limitless support.



## OUR ADOPTABLE PETS ARE READY TO BE THE KINGS AND QUEENS OF YOUR HEARTS!

Adoptions by appointment only, while we move into our new center.

Visit our website at [faithfulfriends.us](http://faithfulfriends.us) to apply!



# Support Local Theatre!



Click “Donate Now” at  
[delshakes.org](https://delshakes.org)



# Creative Team

## **Cassandra Alexander** (Text Coach)

(she/her) is delighted to support this terrific ensemble. A Philadelphia-based actor, teaching artist, and arts administrator, her credits include performances with the Philadelphia Artists' Collective, Delaware Shakespeare, Tiny Dynamite, Alterra Productions, Philadelphia Women's Theatre Festival, Hip to Hip Theatre Company, and Hampstead Stage Company. Cassie holds degrees in Theatre & Drama and Arts Management from Indiana University, although her love of classical theatre blossomed while studying abroad at Shakespeare's Globe in London. Next up: Imogen in *Cymbeline* for the 2023 Community Tour!

## **Calvin Anderson** (Lighting Designer)

(he/they) is a Lighting and Projection Designer located in New York. They have a strong pull towards the devised, the radical and the risky, while leaning towards projects with heart and trust. Favorite projects include *Body as a Site of Faith and Protest* (waheedworks/NYC), *Late Night Snacks 2019* (Bearded Ladies Cabaret/Philadelphia), *Oscar at the Crown* (The Neon Coven/NYC), *Orchid Receipt Service* (Mirror/Fire Productions/NYC), *Strings & Serpents* (Andy Milne), and *Old Man and the Sea* (Pittsburgh Playhouse). Calvin is the Director of Production for Bearded Ladies Cabaret in Philadelphia and Resident Designer and PM for FJK Dance.

**Newton Buchanan** (Community Care Liaison) is a Philly-based actor, theatre producer, and project manager. With a central belief that anything is possible if you lead with curiosity and patience, he endeavors to make an impact by working on projects that affect positive change in others' lives. For Del Shakes, Newton has appeared in *The Merchant of Venice*, *Twelfth Night*, *O Lou Que Quieras*, *The Merry Wives of Windsor*, and *Midsummer Mix Tape*. Newton holds

many lighting design and sound design credits from various professional theatre companies in the region. Co-founder Black Theatre Alliance of Philadelphia; co-founder New Light Theatre. To my son Ethan, for which all I do is in tribute. To Izzy, my whole heart.

**Emanuel "Manny" Chacon** (Choreographer) is a dancer and choreographer from Wilmington, DE. Known for his blend of Capoeira and various dance styles, his diverse exposure to movements has developed a distinct style reflecting diversity and culture. While attending the University of Delaware, he pledged Lambda Sigma Upsilon Latino Fraternity, Inc. Here, his performance experience grew competing regionally and nationally. In 2016, Manny was casted in "Step Afrika!", becoming the first Latino casted in the company's history and earning the opportunity to tour across 45 states and nearly 20 countries. Today, he is the Assistant Director of Dance at Villanova University.

**Bella DeNapoli** (Assistant Stage Manager, College Apprentice) is excited to be joining Delaware Shakespeare this summer! Last May, she graduated from Rowan University with her B.A. in Theatre. Recently she was the Stage Manager for *Equus* (Rowan Department of Theatre & Dance), *Something Rotten!* (Broadway Theatre of Pitman), and *How I Learned to Drive* (Rowan Lab Theatre). Bella would like to thank her friends and family who have supported her these past 4 years at Rowan.

**AZ Espinoza** (Director) is a trans-masculine feminist who makes magic through theatre. Directing credits include Alice Childress's *Wine in the Wilderness* (Philadelphia Artists' Collective and the BlackBestFriend), the world premiere of R. Eric Thomas's *Backing Track* at the

Arden Theatre (associate director), and the Philadelphia premiere of Angelina Weld Grimké's 1915 anti-lynching play *Rachel* at Quintessence Theatre Company. Their play *All My Mothers Dream in Spanish* had its world premiere at Azuka Theatre in 2023, and their play *Homeridae* has been developed nationally and was the Honorable Mention finalist for the Terrance McNally Award. They are the co-founder of [theBlackBestFriend](#), a producing collective that uplifts Black multiplicities. They have been a theater educator at the Wilma Theater, Temple University, Haverford College, and the University of the Arts, and they are a student of liberation everywhere, and for everyone.

**Marisa Gittelman** (Production Manager) is a Philadelphia-based Theatre Artist and Teaching Artist, holding a BA in Theatre Studies, Creation and Production from Temple University. Marisa has practiced in many roles in the world of education as well as theatre, working in the theatre world as a Stage Manager, Director, Actor, and Production Manager all over the Philadelphia area. Marisa is honored and filled with joy at another year running Del Shakes' Summer Fest production, and getting to create a strange and wonderful world with an incredible team - a world that will welcome any and all humans into the realm of Shakespeare. Many thanks to the friends, family, and incredible collaborators who support her and the world building we love to do!

**Michael Hahn** (Sound Designer & Composer) - Previous Delaware Shakespeare credits include: *The Tempest*, *Twelfth Night*, *Merry Wives of Windsor*, *Much Ado About Nothing*, *Henry V*, *Comedy of Errors*, *Taming of the Shrew*, *Hamlet*, *Two Gentlemen of Verona*. **Off Broadway:** *Maurice Hines Tappin' Thru Life* (New World Stages), *White Guy on the Bus* (59E Theaters). **Regional:** *The Exonerated*, *Ain't Misbehavin'*, *The Explorers Club* (Delaware Theatre Company), *Othello*, *An Iliad*, *As You Like It* (Lantern Theater

Company), *Aladdin: A Musical Panto*, *Arthur and the Tale of the Red Dragon: A Musical Panto*, *Beautiful Boy* (People's Light & Theatre).

**Caroline Heins** (Assistant Director, College Apprentice) is a poet, performer, artist, and abolitionist making a home in North Philadelphia. Caroline is delighted to make work with the incredible AZ and honored to be a part of the Del Shakes force. Caroline believes in the power of theatre as a civic experience and a community-building device in resistance of systemic silencing. For Rick and Sarah, for believing. Welcome to the Scottish play!

**Marie Laster** (Set Designer) is a scenic designer born and raised in Philly. Scenic design credits include *Chicken & Biscuits* (TheatreSquared), *All My Mothers Dream in Spanish* (Azuka Theatre), *Robin Hood* (Pittsburgh Public Theater), *The Art of Killin' It* (TheyGotTime Productions), *Wrong River* (Flint Repertory Theatre), *Death of a Driver* (InterAct Theatre), *TJ Loves Sally 4 Ever* (Theatre Horizon), *Untitled* (Barrymore Scenic Design Nomination - Inis Nua Theatre), *A Boy and His Soul* (Kitchen Theatre). Marie received a Bachelor of Architecture degree from Philadelphia University and enjoys channeling her creative energy through the scenic design process.

**J. Bean Schwab** (Properties Designer) (they/them) is a multi-disciplinary theatre maker and arts educator living in West Philadelphia. Their work lives in the intersections between prop design, immersive art, puppetry, and performance. Jilly has worked in community with organizations such as SpiralQ, Theatre Exile, Tribe of Fools, Curio Theatre, Theatre Oblivion, New Paradise Labs, PlayPenn, and works in the Philadelphia Fringe Festival. Bean holds a B.F.A. in Acting from Arcadia University and an M.A. in Theatre from Villanova University. Follow @beansplain on instagram.

**Anna Sorrentino** (Costume Designer) is a freelance costume designer based in Philadelphia, PA. She is a graduate of Villanova University's MA in Theatre, where she earned distinction on her thesis in costume design for *Bakkhai Variations*, a digital new play festival. Other training includes the Wingspace Theatrical Design Mentorship and the Hangar Theatre Design Fellowship. Her work in costume design has been seen at theatres across the Philadelphia region, including Azuka Theatre (*Carroll County Fix*), Hedgerow Theatre (*Cowboy Versus Samurai*), Quintessence Theatre Group (*Camille, Written by Phillis*), Delaware Shakespeare (*Twelfth Night, O Lo Que Quieras*), Eagle Theatre

(*The Wild Party, Water by the Spoonful*), and the Walnut Street Theatre (*Moana*).  
[AnnaSorrentino.com](http://AnnaSorrentino.com)

**Abby Toll** (Stage Manager) is a graduate of Drexel University with a Bachelor of Science in Entertainment and Arts Management. Since graduating in 2018, she has worked as a freelance Stage Manager and Arts Administrator in Philadelphia and the surrounding areas. She has worked for Delaware Shakespeare, Inis Nua, Azuka, and many more. When not working in the arts, Abby is a preschool teacher, working with kids ages 3-5. She loves introducing the magic of the arts to young minds.

# IT'S EVEN BETTER INSIDE.

Use your **MACBETH** playbill  
to claim a free guided or self-guided tour  
of Rockwood Museum.

Rockwood Park & Museum is located at  
4651 Washington St. Ext., North Wilmington  
302-761-4340

Offer valid through 12/31/23



ROCKWOOD.ORG



*"O, for a horse with wings!"*

# *Cymbeline*

**Community Tour 2023**

**Directed by Tai Verley**

October 4-20, locations throughout Delaware

\*Gala performance October 21st\*

More information at [delshakes.org/community-tour](https://delshakes.org/community-tour)

## On-Demand Monologue Coaching

with a member of the  
Del Shakes Artistic Squad



Izzy Sazak



Eric Mills



Mariah Ghant

Personalized training is available in-person or  
virtually, with sessions lasting one hour.

More information at [delshakes.org/on-demand-monologue-coaching](https://delshakes.org/on-demand-monologue-coaching)



# Donors

---

Delaware Shakespeare continues to thrive thanks to the kind support of these individuals and organizations. We gratefully acknowledge the support of our sponsors and friends. If you enjoy your evening of theatre, please consider supporting this great Delaware experience. Thank you.

\* Indicates a donor who has given for five consecutive years

## Corporate, Foundation & Government Donors

\$100,000+

National Endowment for the Arts: American Rescue Plan

\$10,000–\$49,999

Delaware Division of the Arts: General

Operating Support

Delaware Division of Small Business

Delaware Humanities

Laffey-McHugh Foundation

Maurice Amado Foundation

Mid Atlantic Arts: Regional Resilience Award

National Endowment for the Arts: Grants for Arts Projects

National Endowment for the Arts: Shakespeare in American Communities

New Castle County Cares

\$1,000–\$9,999

Apple

CSC

Delaware Division of the Arts: Education Resource

Danaher Lynch Family Foundation

Highmark Delaware

Janssen's Market

JP Morgan Chase Foundation

Kent County Fund for the Arts

Labware

M&T Charitable Foundation

Penn Riverfront Management

Planet10 (in-kind)

Swigg

The Shakespeare Fund of Theatre League of Kansas City

Wilmington City Council

WSFS Cares Foundation

\$500–\$999

Kenny Family Foundation/Shoprite

\$100–\$499

Amazon Smile

A-1 Sanitation (in-kind)

Chubb Charitable Foundation

Google

## Prospero's Circle

Prospero's Circle is comprised of individuals who support Delaware Shakespeare with gifts of \$1,000 or more. The Circle is named after one of Shakespeare's most famous characters, the magician on his magical island in *The Tempest*. At one point, Prospero draws a circle and steps into it to create some of his greatest magic. Supporters at this level can step into Prospero's Circle and allow Del Shakes to create even greater magic.

Juno Level (\$5,000+)

Hugh Atkins & Michele Schiavoni\*

Laurel A. Riegel\*

Julie Sulzbacher Russ\*

Ceres Level (\$2,500–\$4,999)

Anonymous (1)

Susan & Joseph Guariano\*

Pam Huxtable & Nick Johnson\*

Nancy B. Lynch\*

George & Norine Watson\*

Iris Level (\$1,000–\$2,499)

Matt & Vera Belger

Elizabeth Bryson\*

Robert & Sally Coonin\*

The Hon. Barbara D. Crowell\*

Chris & Tom Ditzler\*

Margaretta Frederick & Michael Martin\*

Patty & John Jacob\*

Lynne & Fred Kielhorn\*

Scott & Miranda Matthews

Christine & Garrett Moritz

Charles & Cindy Nelson\*

Alice D. Reilly\*

David & Michelle Stradley\*

Carol Stradley\*



Stephen Stradley\*  
Stephanie Sullivan & Nick Laping\*  
Anne L. Sulzbacher\*  
Dr. S. Todd Townsend  
Danni Van Drew & Grant  
Dick\*  
Carol VanZoeren  
Stephen & Tomoko Werbe

## Individual Donors

### \$500-\$999

Anonymous (2)  
Dan & Cathy Alexander\*  
Josephine & Rick Bayard\*  
Stuart & Lucy Comstock-Gay\*  
Christopher A. & Ann M. Coons  
Dave Ford & Patty Hoffman  
Jonathan Jaffe\*  
Carl & Lynn Lee\*  
Tizzy Lockman & John Collins  
Maureen Maister  
Celia Maurice  
Stephen Nelson & Peter Vitale  
Marcos & Karen Rivero\*  
Blake & Mitzi Rohrbacher\*  
Michael Rosen  
Achille Scache & Laura Owens\*  
Michael & Sharon Schwartz\*  
Vanessa Simon  
Lynne & Rusty Suher\*  
Matthew & Janice Sullivan\*  
Danielle & Kevin Sullivan\*  
Joshua & Jin Twilley

### \$250-\$499

Mr. and Mrs. Thomas H. Anderson, III\*  
Marianne & Chris Archbell  
Aldos & Susan Barefoot\*  
Mona B. Bayard  
Dave Brinkley & David Cole  
Brad & Karyn Bush  
Carey Corbin  
Gayle Dillman  
Sarah M. Ennis\*  
Jay L. Halio & Diane Isaacs\*  
Linda M. Heckert\*  
Ann Hriciga & Mike Coughlin\*  
Jan Jessup\*  
Dr. Sheridan Kingsberry & Stephen

Kingsberry  
Kevin & Sue Loney\*  
Elena Machado Sáez  
Vicky & Matt Martelli  
Erin M. McDonald\*  
Kathe & Rich Morse  
Don & Liz Nicholson  
Keith Pettiford  
Karen D. Poore\*  
Riedel Family  
Dr. Daniel L. Smith & Mrs. Tara L. Smith  
Holly Taglier  
Marilyn Whittington  
David J. Wierz\*

### \$100-\$249

Anonymous (3)  
Laura Adarve  
Cassandra Alexander  
The Altrichter Family  
Thomas & Mary Lou Ambro\*  
Rossana Arteaga-Lopenza & Cliff Gardner  
Greg & Sally Barclay  
Madeleine Bayard & Jared Klose\*  
Dr. Rabbi Michael & Dr. Elissa Green Beals\*  
David & Constance Beattie\*  
Ed & Julie Breiner  
Allison Buonocore  
Judith Calhoun\*  
Anne Carter Carlton  
Katherine Caudle  
Christine Chastain Warheit  
Charles & Judith Conway\*  
Brendan & Julia Cooke\*  
Mark & Jenn Corso  
Kevin & Erica Darkes  
Theresa Deakins\*  
Doug Doerfler & Anne Ashbrook\*  
William Donnelly & Ryan Grover  
Dave Fleming  
Jo Pharo Freed\*  
Dennis Gallagher  
Jeff & Linnea Goddess\*  
Guillermina Gonzalez & Charles Sobrero  
Peter D. & Kate Gordon\*  
Joanne & Dave Govatos  
Mr. & Mrs. Robert Grenfell\*  
Bill Hardam & Lorena Meunier  
Susan Herrmann  
Mark & Nancy Hetterly\*  
Nila & Douglas Hill\*  
Lynne Howard & Don Brown\*

Nadine Howatt  
 Lee Hummel  
 John Hynes  
 Dorothy R. Jacobson  
 Brook & Karen James  
 Chris & Eliza Jarvis  
 Chris Johnson & Katie Soja Johnson  
 Bryan & Kay Keenan  
 Elinor L. Knodel  
 Alice & Curtis Knott  
 Rob & Jean Krapf  
 Mary Louise Kubacki\*  
 Gregory & Lynne Landrey\*  
 Kimberly Larkin  
 Eric & Diane Leichter\*  
 Kathi Leopardi  
 Richard & Marilyn Levin\*  
 Dr. & Mrs. William Mannella\*  
 Jim & Joan March  
 Steven & Carol Marino\*  
 Dorothy McBride  
 David & Sally McBride  
 Heather & Steve McCall  
 Christina McCawley  
 McCormick Giving Fund  
 Greg & Donna McCoy  
 James McGiffin  
 Mary & Ed McNeeley\*  
 Faith Meisinger-Petit  
 Eden Morgan  
 Russell Morrissey  
 Colin & Traci Murphy  
 Kathleen Murphy  
 Rachel O'Hanlon-Rodriguez  
 Paul O'Neill  
 Moira Owens  
 Mary Palmer-Ruth  
 Mark & Cathy Parsells  
 David Pasanek\*  
 Richard & Eunice Pryor\*  
 Lourdes I. Puig\*  
 Christina Pupillo  
 Janice & Leslie Reidel\*  
 Andrea Riley  
 Jeff & Trudi Robinson  
 Peggy Schultz  
 Jason Scott  
 Michelle Scott  
 Elaine Singleton  
 Stacy Skinner  
 Joanne Smeltz\*

Janice & Clifford Smith\*  
 Paul Smith, Jr.  
 Christine Sowinski  
 Karen Spring  
 Nancy Steckel\*  
 Mike & Kit Sullivan  
 Melissa Tedone  
 Tom & Sara Thompson  
 Greg & Judy Tigani  
 Mamie Voight  
 Sue Weissinger\*  
 Amelia Wiggins & Jonathan Huntoon  
 Miranda Wilson & Tim Spaulding  
 Bonnie Wingate  
 Rich Witmeyer  
 Janet Wurtzel  
 Robert B. Young\*  
 Laurie Ross & Steve Zimmerman\*

\$50–\$99

Anonymous (3)  
 Joseph Ahmed  
 Jack Alexander  
 Krista Apple & Scott Klaum  
 Lois Barth  
 Kathy & Jim Berg  
 Susan Bryson  
 Nora Cannon & Joel Schiller  
 Bill Collins & Priscilla Goldsmith  
 Roma Dockhorn  
 Michael Everhart  
 Chad Fahs & Meghann Matwichuk  
 Gregory & Carla Fiske  
 John & Nancy Gardner  
 Nancy Hannigan  
 Duncan Hood  
 Nancy Hough  
 Judith Jennings & Dennis Matthews\*  
 Lawrence Kraines  
 Thomas & Catherine Lapenta  
 Penny Lehrer  
 Allison Levine  
 Gary Linarducci  
 Janet Lindenmuth  
 Carol & Gwynn Lyell \*  
 Clara Mattucci  
 Judith McDermott  
 Natalie & Thomas McKenney  
 Marcy Oligher  
 Sarah Palm  
 Ellen Roberts

Jeffrey & Katherine Robleto\*  
 Robert Rudolph  
 Barbara Shope  
 Drs. Gary & Caroline Smith\*  
 Malina Spirito  
 Pamela Stephani & Richard Morelli  
 Florence & Sheldon Stiefeld  
 George & Stacey Tietze  
 Luisa Torrielli  
 Jenny Wei  
 Bob Weick  
 Michele Weiner\*  
 Mary Wilcosky\*  
 Jeff Wilkinson  
 Marcelle Williams

\$1–\$49

Anonymous (2)  
 Sasha Aber  
 Ariel Adams  
 Latoya Adams  
 Corina Amalfitano  
 Carol Arnott-Robbins  
 Mike & Cindy Barko  
 Rob Beatson  
 Maya Belardo  
 Maryanne Bourque  
 Jayne Boykin  
 Becky Brill  
 Ruth K. Brown & David  
   Sokolowski\*  
 Jeanne & Robert Buffum  
 Alexandra Carpio  
 Jerry Carr  
 Patrick Carroll  
 Annalisa Castaldo  
 Tamara Chalmers  
 Lynn & Greg Ciarlo  
 Hadrian Cissell  
 Alison Coe  
 Deborah Costas  
 Andrew Cretella  
 Susan Lynch Crow  
 Olga Crowther\*  
 Ashley SK Davis  
 Walter & Denise Dawson  
 John Defeo  
 Helene M. DelNegro  
 Elaine Dryden  
 Jim Dudek  
 Brian Duffy

Linda Emerick  
 Aurelien & Kelsey Eulert  
 Charlotte Faccenda  
 Ros Fenton  
 MJ Fernbacher  
 Eddie Flores  
 Katherine Fluker  
 Lynn & Chad Foor  
 Cynthia Ford  
 Nora Frank  
 John Frankenberg  
 Kristin Froehlich  
 Sue Fuhrmann  
 Mary Lou Gagliano  
 Rosa Garcia  
 Sandra Georgi  
 Mariah Ghant  
 Brian & Katie Givens  
 Beth Goldstein  
 Kristina Gonser  
 Octavio Gonzalez  
 Ken Grant  
 Adrian Greenwood  
 Rosanne Griff-Cabelli  
 Jason Guan  
 Patricia Guarino  
 Judith Haas  
 Patricia Hampton  
 Barbara Harbin  
 George Harding  
 Olivia Hayward  
 Thomas Healy  
 Victoria Healy  
 Kia Hicks  
 Fred & Vera Orthlieb\*  
 Mary Jane Pahls  
 Ewa Papiez  
 Mark Paquette  
 Deanna Seningen  
 Kathryn Shaw  
 Sheila Shaw  
 Geoff Snowman  
 Laura Spangler  
 Stephanie Staats  
 Brittney Stanton  
 Nathaniel Sullivan  
 Sara Sullivan  
 Asha Swanson  
 Thomas Swanson  
 Ekaterina Swearingen  
 Irene Thammavong

Jessica L. Thompson  
Tom Torello  
Mike & Swathi Trotter  
Mia Trotter  
Laura Viau  
William White  
Jon & Barbara Wiechecki  
Charlotte Williams  
Brian Wilson  
Jeffrey Wilson  
Nancy Wingate  
James Wisdom  
Lauri Witte  
Aileen Wolfe  
Emily Wolfe  
Bill Wood

\*This list includes donations received between June 15, 2022 and June 15, 2023.

We strive to ensure the list is correct. If your name is misspelled or omitted, please accept our sincere apologies and inform our offices at 302.468.4890.

## Support Local Theatre!



Click “Donate Now” at  
[delshakes.org](https://delshakes.org)



**TOGETHER,  
WE CAN MAKE  
A DIFFERENCE**

CSC is proud  
to support the arts  
in Delaware as we  
strive to make a  
positive impact in  
our communities.

*We are the business  
behind business*  [cscglobal.com](https://cscglobal.com)

# Board of Directors and Staff

## Board of Directors

Julie Sulzbacher Russ, President  
S. Todd Townsend, Vice President  
Scott Matthews, Secretary  
Susan Guariano, Treasurer

Rachel O'Hanlon-Rodriguez • Achille "Ash"  
Scache • Vanesa Simon • David Stradley  
• Matt Sullivan • George H. Watson •  
Marilyn P. Whittington

## Staff

Producing Artistic Director: David Stradley  
Artistic Partner/Development Officer:

Cassie Alexander

Associate Producer: Jeff Robleto

Marketing & Business Associate: Tess  
Edwards

Education Coordinator: Caitlyn Shaffstall

Artistic Squad: Mariah Ghant, Eric Mills,  
and Izzy Sazak

## Production

Community Care Liason: Newton  
Buchanan

Pre-Show Director: Dave Warick

Technical Director: Robert McMahan

Master Electrician: Isabella Gill-Gomez

Sound Engineer: Jen Scorziello

Wardrobe Supervisor: Emmie Parker

Assistant Director: Caroline Heins

Assistant Stage Manager: Bella DeNapoli

Production Apprentices: Spencer Duff, Katie  
Givens, Liam Sibbers

COVID Safety Officer: Emily McAllister

## Front of House

Festival Manager: Jeff Robleto

House Manager: Emily McAllister

Box Office Captain: Sascha Bretzger

Field Captain: Michael Rosen

Concessions Captain: Amelia Moss

## High School Interns

Lola Fenning, Da'cota Huggins,

Keiry Oquendo, Josephine Welch

## WIN A DEL SHAKES T-SHIRT!



Complete the survey at  
**[delshakes.org/tshirt](https://delshakes.org/tshirt)** for  
a chance to win.



## Special Thanks

To all our friends at Harvey Hanna & Associates, Janssen's Market, Out 'n About, Penn Cinema, New Castle County Libraries, Old-Fashioned Ice Cream Festival, OperaDelaware, Philadelphia Artists' Collective, Resident Ensemble Players - University of Delaware, Swigg, and Wilmington Brew Works.

And also to Melanie Bowditch, Carey Lockman Corbin, Ryan Grover, Kevin Hoover, Dena Kirk, Matthew Meyer, Brendan Moser, Jane Rattenni, and Marina Rosaio-Roddy.

## Antiracism

Delaware Shakespeare is committed to a work and audience environment in which all individuals are treated with respect and dignity. Delaware Shakespeare expects that all persons working, performing, attending, or otherwise conducting business connected to our activities will strive to be free of racial bias and prejudice, and be committed to eliminating racial harassment or racial transgressions. We reject all forms of racism as destructive to our mission, vision, values, and goals. We will pursue ongoing antiracism dialogue so that all can continue to grow.

## Land Acknowledgment

Delaware Shakespeare performs on the traditional lands of the Lenni-Lenape people - we acknowledge them as the original stewards of this land. Del Shakes aims to bring our community together to explore our shared humanity. During today's performance, we invite you to consider how your humanity is interlinked with that of the Lenape people.

# Practical Matters

---

## Accessibility

The Delaware Shakespeare Summer Festival is wheelchair accessible. Accessible restrooms are available.

## Bugs

Our grounds are sprayed with an all-natural mosquito repellent during Summer Festival weeks. For added protection, feel free to use the mosquito spray at one of our complimentary stations.

## Cameras

Cameras and recording devices – yes, including cell phones – are strictly prohibited during the show. Feel free to snap away during pre-show entertainment and at intermission. And we love to see your photos! We use #delshakes.

## Cell Phones

Please silence your cell phones during the performance.

## Concessions

Our concession stand sells souvenir T-shirts, light refreshments, wine by the bottle at the Swigg Festival Wine Shop, and picnic food from Janssen's Market.

## Feedback

We love to hear your thoughts and suggestions. Contact us at [info@delshakes.org](mailto:info@delshakes.org) or at [Facebook.com/delshakes](https://www.facebook.com/delshakes).

## Need help?

If at any time you have a question or need help, ask to see a staff member at our concession tent.

## Pets

Sorry, no animals are permitted on the Festival grounds (except for specially-trained service animals).

## Recycle Programs

If you like this program, please keep it – or you can return it to us at the concessions tent as you leave the park.

## Restrooms

Follow signs to the restrooms beyond the gazebo, at the opposite end of the lawn from the mansion.

## Safety

Please do not enter backstage areas during the production, and keep aisles clear for actors during the show.

## Seating

Seating begins at the stage with blanket seating, followed by low-back “beach” chairs and high-back “lawn” chairs. We kindly request you follow the advice and guidance of our volunteer ushers as they try to create a space where everyone can see.

## Smoking

Smoking is prohibited everywhere on the grounds of the Summer Festival.

## Weather

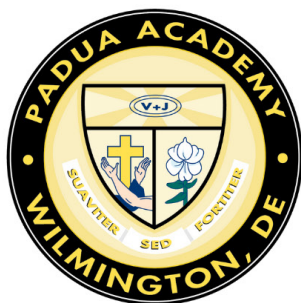
Performances continue in a light rain. In heavy rain, staff may call a 20-minute rain delay. If it is not possible to continue, the performance will be cancelled and rain checks are issued to all audience members. Lightning strikes within 10 miles of the park will result in the immediate cancellation of a performance.

## Please Note

Delaware Shakespeare and Rockwood Park/New Castle County are not liable for any damages including, without limitation, direct, indirect, incidental, special, punitive, consequential or similar damages related to the use or misuse of alcohol during or after a performance.

# Padua

## A C A D E M Y



***Rooted in the Catholic faith, Padua Academy offers young women a transformational college preparatory education, challenging them to live Christ-centered lives of leadership and service.***

---

***Spirituality - Scholarship - Service - Sisterhood***



**FIND YOUR PLACE ON  
BROOM STREET**



**Riverfront**  
Ministries

We are an inclusive faith community of

## *Song, Word, Table*

We are creative, collaborative, and sacramental. We gather for worship, learn together, and serve with the community around issues of food & economic justice.

 @riverfront\_ministries  RiverfrontMinistriesDE



Check out  
our website!



## *Join Us For Worship Sunday at 5:05 p.m.*

Each Sunday we gather outside at the Hare Pavilion on the Wilmington Riverfront. Riverfront is an inclusive ecumenical space. Many within our community are seeking a place to explore their faith while healing from past hurts within the church. We seek to be a place where all are welcome and questions are celebrated.

**1st Sunday:** 505 Worship- A service w/ Sermon, Communion & Music

**2nd Sunday:** Community Concert Series- Local musicians lead our time with music and reflections

**3rd Sunday:** Taize Worship- A reflective and meditative service with music and silence

**4th Sunday:** Dinner Church- Worship through dinner gathered around the table sharing with one another

**5th Sunday:** Spoken Word Event

***Come support the Wilmington Kitchen Collective  
one of our Community Projects:***

## **TASTE & SEE WITH WKC**



### *Lunchtime Market*

Grace Church Parking Lot  
900 N. Washington St.

Join us for lunch &  
music every  
Thursday  
11 AM -2 PM.







- Real Estate
- Estate Planning and Administration
- Family & Domestic Law
- Civil Litigation



*Serving all of  
Delaware  
and  
Southeastern  
Pennsylvania*

**WITH 6 CONVENIENT OFFICE LOCATIONS!**

PIKE CREEK (302) 234-6588	HOCKESSIN (302) 892-6210	GREENVILLE (302) 766-9030
MIDDLETOWN (302) 225-3900	LEWES (302) 827-6050	REHOBOTH (302) 792-7333

*Because Experience Matters*  
*[www.gdwlawfirm.com](http://www.gdwlawfirm.com)*



rep  
RESIDENT  
ENSEMBLE  
PLAYERS

Delaware's Resident Professional Acting Company

23/24 SEASON



***Vita and Virginia***

by Eileen Atkins

Sept. 21 - Oct. 1

***John Ball's  
In the Heat  
of the Night***

adapted by Matt Pelfrey

Nov. 2 - 19

Subscriptions  
on sale  
AUG 1!

***Pass Over***

by Antoinette  
Chinonye Nwandu

Feb. 8 - 18

***Deathtrap***

by Ira Levin

Apr. 11 - 28

ROSELLE CENTER FOR THE ARTS  
NEWARK, DE | 302-831-2204  
WWW.REP.UDEL.EDU



UNIVERSITY OF  
DELAWARE