




DELAWARE
SHAKESPEARE
SUMMER FESTIVAL 2024

JULIUS CAESAR



JULY 18-AUG. 4, 2024
ROCKWOOD PARK
WILMINGTON, DELAWARE



Contemporary Glass Art Installations

THE NATURE OF GOTHIC

JULY 13-
NOV 10



ROCKWOOD.ORG



JULIUS CAESAR

By William Shakespeare
Directed by Tai Verley

Andrew Robinson
Set Designer

Ilycia Boatwright-Buffaloe
Costume Designer

Michael Hahn
Sound Designer

Isabella Gill-Gomez
Lighting Designer

Carol Vanzoeren
Props Designer

Colleen Hughes
Intimacy/Choreographer

Cassandra Alexander
Text Coach

Alex "Ra" Savage
Stage Manager

Marisa Gittleman
Production Manager

SET BUILT AT PHILADELPHIA SCENIC WORKS

Summer Festival Sponsors and Partners



Honorary Producers

HMF Beaudoin Family Foundation

Frank & Shelley Tombari



Delaware Shakespeare is supported, in part, by a grant from the Delaware Division of the Arts, a state agency, in partnership with the National Endowment for the Arts. The Division promotes Delaware arts events on DelawareScene.com.



Presented in partnership with New Castle County
Matthew S. Meyer, County Executive

Cast List

Marcus Brutus	Satchel Williams
Caius Cassius	Emily Schuman
Julius Caesar/Pindarus	Sarah Stryker
Mark Antony	Mariah Ghant
Decius Brutus/Messala	Brittany Onukwugha
Casca/Cinna the Poet/Strato	CJ Higgins
Calpurnia/Artemidorius/Servant 3/ Titinius	Rachel O'Hanlon Rodriguez
Portia/Servant 2/Octavius	Lex Thammavong
Lucius/Caius Ligarius/2nd Citizen/Soldier	Louise Sims*
Cicero/Metellus Cimber/3rd Citizen/Soldier	Lucia Herndon*
Trebonius/Soothsayer/Servant 1/1st Citizen/Soldier	Stevie Smith Iannettoni*
Cinna/4th Citizen/Volumnius	Nylarose Moore*

Understudies

Madeleine Garcia (Brutus), Lucia Herndon (Portia, Decius Brutus), Elsa Kegelman (Cassius), Victoria Kimball (Lucius/Caius Ligarius/2nd Citizen/Soldier and Cicero/Metellus Cimber/3rd Citizen/Soldier), Nylarose Moore (Casca/Cinna the Poet/Strato, Calpurnia), J. Carmen Rafalli (Trebonius/Soothsayer/Servant 1/1st Citizen/Soldier and Cinna/4th Citizen/Volumnius), Louise Sims (Mark Antony), Stevie Smith Iannettoni (Caesar)

Board of Directors

Julie Sulzbacher Russ, President
Alfred Lance, Vice President
Scott Matthews, Secretary
Susan Guariano, Treasurer

Ellen Cappard	Vanesa Simon
Kimberly Duus	Matt Sullivan
Mariah Ghant	Robert Tombari
Eric Mills	George H. Watson
Achille Scache	

Staff

Artistic Director Mariah Ghant
Managing Director Robert Tombari
Artistic Partner &
Development Officer Cassie Alexander
Education and Community Outreach
Coordinator Damala LaVette

Production

Director Tai Verley
Community Care Liaison Izzy Sazak
Pre-Show Director Eric Mills
Technical Director Anthony Wiegand
Assistant Technical Director John Starmer
Head Electrician Spencer Duff
Sound Engineer Jen Scorziello
Wardrobe Supervisor Joshua Thorpe
Production Manager Marisa Gittelman
Crew Lead Katie Givens
Directing Apprentice MK Prophett*
Stage Management
Apprentice Olivia Segada*
Production Apprentice Victoria Kimball*
Musician Christina Foye
Graphic Design Bailey Kung

Front of House

Box Office Manager Sascha Bretzger
Front of House Manager Punchhi Pandit
Field Captain Ryan Wolynetz
Concessions Captain Rona Marquette

*indicates College Apprentices

The Delaware Historical Society is Proud to Partner with Del Shakes

TO ENRICH OUR COMMUNITY AT THE
INTERSECTION OF ART, CULTURE AND HISTORY.

At the Delaware Historical Society, we tell the entirety of Delaware's unique story the way nobody else can or does.

Make plans to visit us soon.

dehistory.org

DELAWARE HISTORY MUSEUM | OLD TOWN HALL
| RESEARCH LIBRARY | MITCHELL CENTER FOR
AFRICAN AMERICAN HERITAGE | READ HOUSE &
GARDENS IN OLD NEW CASTLE

From the Director

When I first read this play, I was in high school and I remember thinking it was deeply impersonal and all about politics. And frankly – it was boring (Yeah! I said it.)

“This is just a bunch of angry men. Why should I care?”

But here I am more than 2 decades later, after much education and experience, writing this Director's Note, listening to the news as my 16 month old son naps. More than ever, it is so clear to me that all over the world, one's safety, jobs, relationships can be affected by politics. Politics shape our world. And I deeply care about the environment in which my kid will grow up. It *all* feels personal.

As a director (and as an actor!), I believe in asking this question –

WHAT MATTERS MOST TO YOU?

(What would you do for your friends, loved ones? For yourself?)

Yes, I am usually talking about a character's friends and loved ones. But still – how do actors portray that kind of relationship? Why do audiences empathize with characters or situations? Theatre taps into something very close to the heart.

Politics and theatre have this in common – Both are personal.

Therefore, as you watch Julius Caesar, pay attention to WHAT MATTERS MOST to whom and why.

Ask yourself some of these questions too:

- Where does your heart push you?
- It is towards what's “right”? How do you know what's right?
- Do you care about what happens to your relationships – Friends? Partners?
- How do you maintain and respect boundaries?
- Does your life need to look a certain way? Why??

Those questions are just the tip of the iceberg! I hope you will have so many more.

I believe in making theatre that makes all of us ask more questions of ourselves and society. How will we all change after we see this production? What about this show felt *too* personal?

But as you near the end of this Director's Note, I bet you're thinking, “What matters most to YOU, Tai?! What am I about to watch?!” Well... when I assembled this racially diverse and gender expansive cast and production team, I realized how many of our marginalized identities would've been tossed aside by the standards of Shakespeare's place and time. And thankfully, we don't live there or then. This world, *my* world, is rich in perspectives that span the spectrum. They deserve the light. They are the light. We are the light.

So... What matters most? Creating a resplendent (artistic) future that I can be proud to show all generations, including my son.

Enjoy *Julius Caesar*.

– Tai Verley

Synopsis Courtesy of The Shakespeare Birthplace Trust

Jealous conspirators convince Caesar's friend Brutus to join their assassination plot against Caesar. To stop Caesar from gaining too much power, Brutus and the conspirators kill him on the Ides of March. Mark Antony drives the conspirators out of Rome and fights them in a battle. Brutus and his friend Cassius lose and kill themselves, leaving Antony to rule in Rome.

ACT I

The tribunes of Rome, Marullus and Flavius, break up a gathering of citizens who want to celebrate Julius Caesar's triumphant return from war. The victory is marked by public games in which Caesar's protégé, Mark Antony, takes part. On his way to the arena, Caesar is stopped by a stranger who warns him that he should 'Beware the Ides [15th] of March.' Fellow senators, Caius Cassius and Marcus Brutus, are suspicious of Caesar's reactions to the power he holds in the Republic. They fear he will accept offers to become Emperor. He has been gaining a lot of power recently and people treat him like a god. Cassius, a successful general himself, is jealous of Caesar. Brutus has a more balanced view of the political position. The conspirator Casca enters and tells Brutus of a ceremony held by the plebeians. They offered Caesar a crown three times, and he refused it every time. But the conspirators are still wary of his aspirations.

ACT II

Cassius, Casca, and their allies plant false documents to manipulate Brutus to join their cause to remove Caesar. After doing so, they visit Brutus at night in his home to persuade him of their views. There they plan Caesar's death. Brutus is troubled but refuses to confide in his devoted wife, Portia. On 15 March, Caesar's wife, Calpurnia, urges him not to go to the Senate. She has had visionary dreams and fears the portents of the overnight storms.

ACT III

Caesar is nevertheless persuaded by flattery to go to the Capitol. At the Capitol, he is stabbed by each conspirator in turn. As Brutus gives the final blow, Caesar utters the famous phrase: Et tu, Brute? Against Cassius's advice, Brutus allows Mark Antony to speak a funeral oration for Caesar in the market place. He is allowed under the condition that first Brutus must address the people to explain the conspirators' reasons and their fears for Caesar's ambition. After Brutus speaks, the crowd becomes calm and supports his cause. However, Antony, in his speech, questions the motives of the conspirators and reminds the crowd of Caesar's benevolent actions and of his refusal to accept the crown. He also reads them Caesar's will, in which Caesar leaves public land and money to each Roman citizen. Antony's speech stirs the crowd into a murderous riot, and the conspirators are forced to flee from the city.

ACT IV

Brutus and Cassius gather an army in Northern Greece and prepare to fight the forces led by Mark Antony. Antony has joined with Caesar's great-nephew, Octavius, and with a man called Lepidus. Away from Rome, Brutus and Cassius are filled with doubts about the future and quarrel over funds for their soldiers' pay. After making amends, they prepare to engage Antony's army at Philippi, despite Cassius' misgivings about the site. Brutus stoically receives news of his wife's suicide in Rome. He then sees Caesar's ghost as he tries to rest and is unable to sleep on the eve of the conflict.

ACT V

In the battle, the Republicans (led by Brutus) appear to be winning at first. But when Cassius' messenger's horse seems to be overtaken by the enemy, Cassius fears the worst and gets his servant to help him to a quick death. After finding Cassius's body, Brutus commits suicide. He believes this to be the only honorable option left to him. Antony, triumphant on the battlefield, praises Brutus as 'the noblest Roman of them all' and orders a formal funeral before he and Octavius return to rule in Rome.

THEATRE MAGIC
cannot happen without YOU!
Make a gift to support high-quality arts experiences for all Delawareans
DELSHAKES.ORG



For more than 60 years, we've maintained the highest quality foods, and superb customer service. Whether you're looking for gourmet or everyday, stop by our store to look!



WWW.JANSSENSMARKET.COM

3801 KENNETT PIKE, GREENVILLE, DE | 302.654.9941

The Cast



Mariah Ghant (Mark Antony) (she/her) is thrilled to be making her second appearance in a Del Shakes Summer Festival production in one of her dream

roles. Most recently, Mariah has performed as Macbeth in *Macbeth* and Titania/Hippolyta in *A Midsummer Night's Dream*, both with Delaware Shakespeare. She has also assistant directed *Fat Ham* at the Wilma Theater and *Once on This Island* at the Arden Theatre Company. Mariah is the Artistic Director of Delaware Shakespeare, a former Arden Apprentice, a member of Theatre Contra, and an improviser with ComedySportz Philly. Mariah is very passionate about dancing, teaching, and terrible reality TV. Learn more about her at mariahghant.com. Love always to the Mama!



Lucia Anne Herndon* (Cicero/Metellus Cimber/3rd Citizen/Soldier) (she/her) is a rising junior in Temple University's Musical Theater BFA program. Born and raised in New York City, she trained at Harlem School of the Arts throughout adolescence and is passionate about accessible, culturally responsive theater. Recent credits include *A Famous Studio's But I'm a Cheerleader: A Pride Shadowcast*, TU's *From Okra to Greens* and TU Theater for Young Audiences' school tour. She is grateful to Del Shakes' apprentice program for the growth and joy this opportunity has provided and to her loved ones for supporting and nourishing her silly weird self.



CJ Higgins (Casca/Cinna the Poet/Strato) (they/he) is a theatre artist with a focus on queer identity, radical empathy, and liberation for all. He was last

seen on the Del Shakes stage as Witch 3 in *Macbeth*. Other performance credits include *A Midsummer Night's Dream* (Puck/Philstrate), *The Importance of Being Earnest* (Algernon), *The Lizard of Oz* (Dr. Jake Gyllenhaal), and *Ghost Quartet* (Pearl). They have also directed and performed in many productions with The Hum'n'bards Theater Troupe. Thanks and love to Del Shakes for having them back, their families both chosen and given, and their partners Travis, Angie, and Linden! IG @ceg.jeg, CJHigginsTheatre.com



Nylarose Moore* (Cinna/Volumnius) (she/her) Nylarose is a recent graduate of the University of the Arts. Her past credits include: *Angel Marisol*

dir. by Cat Ramirez, *Claudius Hamlet* dir. by Jamison Foreman, *Usher/God Everybody* dir. by Allen Radway, and Featured Player *Pippin* dir. by Zi Alikhan. Nylarose is super excited to be doing this show with one of her best friends Stevie. Enjoy the journey!



Rachel O'Hanlon-Rodriguez (Calpurnia/Artemidorius/Servant 3/Titinius) (they/she/he/we/us) is thrilled to be with Del Shakes' for their third Summer

Festival! They are a multidisciplinary performance-based artist, organizer, non-profit arts administrator, and trauma informed teaching artist. Rachel's creative work explores generational cycles, boundaries, borders and liberation through poetry and storytelling. She's spent more

than a decade working throughout the Philadelphia region working with companies such as the Die-Cast Collective, The Wilma Theatre, and the Bearded Ladies. They serve as the Operations Associate for Spiral Q who uses the power of art to connect people, neighborhoods, and movements to their collective creative force for change. Follow Rachel's creative journey on Instagram @the.inter.section or at www.rachelohanlonrodriguez.com.



Brittany Onukwugha (Decius Brutus/Messala) (she/her) is a Philly/NJ based actor, dancer, and graduate of Rutgers University-Camden. Regional: *An*

Army of Lovers (Chloe, Azuka Theatre), *The Complete Works of Jane Austen Abridged* (Self, Tiny Dynamite), *Say It Ain't So* (Future's Voice, Revolution Shakespeare), *To Reach Across a River* (Batya, Theatre Ariel), *The Taming* (Livia, Shakespeare in Clark Park), *A Midsummer Night's Dream* (Titania/Hippolyta, Arden Theatre). She's also worked on productions in roles such as Associate Choreographer, Dance Captain, Fight Captain, and is the Associate Producer of The Wilma Theater. Website: www.brittanyonu.wordpress.com Social Media: @brittanyonu



Emily Schuman (Caius Cassius) (she/her) is thrilled to be joining Delaware Shakespeare this summer! A graduate of the Fame! high school

in NYC, Emily received her BA in Theatre from Denison University and studied Shakespeare in Performance at the RADA school in London. Regional: *Cymbeline*, *Merchant of Venice* (Delaware Shakespeare), *Christmas Carol* (Walnut Street Theatre), *Love's Labour's Lost* (Revolution Shakespeare), *The Nose* (EgoPo Classic Theatre), *Misalliance* (IRC). She is also a

freelance props designer and folk singer-songwriter. Her current solo EP *Full Fathom Five* features songs inspired by the writings of Shakespeare. emilyschuman.net



Louise Sims* (Lucius/Caius Ligarius/2nd Citizen/Soldier) (she/her) is a sophomore theatre major at Northwestern University and is so jazzed to

be part of the wonderful community that is Del Shakes! Favorite credits include *The Tempest* (Spirit/Mariner 2); *Fefu and Her Friends* (Sue) at Northwestern, *Anything Goes* (Reno) and *Clue!* (Wadsworth) at East High School, and *The Wizard of Oz* (Munchkin) at The Walnut Street Theater. Offstage, Louise can be found baking, reading, directing, or cutting her bangs. Love to her family & the dog. This one is for Bop.



Stevie Smith Iannettoni* (Trebonius/Soothsayer/Servant 1/1st Citizen/Soldier) (they/she) is a recent graduate of the now

extinct University of The Arts. They are so excited to take on their first show post graduation! They have bounced from an ensemble member in *Woyzeck* dir. by Roz Cramer, Bessie the Cow in *Sometimes the rain, Sometimes the sea* dir. by Francesca Montanile Lyons, Nick Bottom in *A Midsummer Night's Dream* dir. by Krista Apple, Mia Thomas in *Unfair Advantage* dir. by Doriane Feinstein as a part of The Philly Women's Theatre Festival, The Countess in *The Cherry Orchard Musical* dir. by Priyanka Shetty and The Emcee in *Cabaret* dir. by Daniel Kitrosser and Jacob Brent. They are also so excited to be doing a show with one of their best friends Nylarose. Enjoy the show and beware the Ides of March!



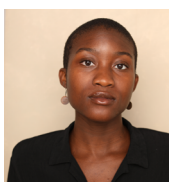
Sarah Stryker (Julius Caesar/Pindarus) (she/they) likes to find the funny in the darkness. They are a performer, playwright, and director working out of

Philadelphia. She was a STRIDES Collective 2023 Emerging Playwright, where she wrote *Making It* (CollABO finalist '24.) Her radio play *Going Dark* premiered at Pomona College ('24), and her short play "*Against the Wind*" was a KCACTF 2023 Finalist. Sarah writes for Impulse Control Freaks, performs with Adaptive Artists and Philadelphia Young Playwrights, directs at Delaware County Community College, and teaches at Montgomery County Community College and Pennsylvania Theatre Institute. Education: MA Villanova University '22, Hedgerow Theatre Fellowship '23, National Theatre Institute TheatreWeek '23, Dell'Arte International '14, Stella Adler School of Acting '12.



Lex Thammavong (Portia/Servant 2/Octavius) (they/she) Lexi Thammavong is an actor, singer, and playwright based in Philly. She obtained

her BFA in Musical Theatre with a minor in Creative Writing from The University of the Arts. Recent credits include playing "Pamela" in *Head Over Heels* at Theatre Horizon and "Mimi" in *Rent* at the Media Theatre. Whether exploring characters like "Ariel" in *The Tempest* with Delaware Shakespeare Company or "Helen" in PAC's adaption of *Jane Eyre*, Lex strives to find new ways to explore, revitalize, and decolonize the classics. As a rising playwright, they are also passionate about devising new work.



Satchel Williams (Marcus Brutus) (she/they) is a Brooklyn-born, Philadelphia-based actor and writer, and is elated to be back at

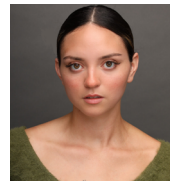
Delaware Shakespeare! Her first post-grad gig was the DelShakes acting apprenticeship for *The Merry Wives of Windsor*, if 2019 Satchel could see themself now! Since then, she has had the pleasure of working with many reputable theater companies, including Inis Nua, Tiny Dynamite, Azuka, InterAct, Theatre Horizon, and the Strides Collective, to name a few. When not on/backstage, you can catch them managing a landscape architecture studio and gallery, talking about astrology or Love Island, and procrastinating on video essay-scripts.

Understudies



Elsa Kegelman (she/her) is a Delaware-based actor, singer, theatre educator, podcaster, and "good mover" if you're squinting. This is her Del Shakes professional

debut, with previous credits including New Light Theatre's Barrymore-nominated production of *A View from the Bridge* and *Proof* at The Stagecrafters. To stay updated on all things Elsa, visit elsakegelman.com or check out @kegelwoman on Instagram. Many thanks to Tai, the Del Shakes team, and to her family, friends, and Cole for their support. Elsa dedicates this performance to her grandmothers, Kathleen Kobus and the late Mary Kegelman.



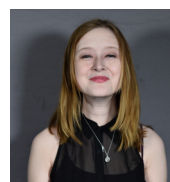
Madeleine Garcia (she/they) is an actor and teaching artist in Philadelphia. Most recently in People's Light's *A Christmas Carol*, PAC's *Children*

of the Sun, and the Montgomery Theater's *Native Gardens*. Other credits include commercial work for Wawa, White Castle, and ESPN. They are so grateful for this amazing opportunity to work with such a gifted cast & crew!



J. Carmen Rafalli (they/he) is a rising senior at Dickinson College, majoring in Theatre and Dance and Educational Studies.

Julius Caesar is his first production with Delaware Shakespeare and he is so delighted to be a part of this company. Previous roles include Ernst in *Spring Awakening* and Phaethon in *Metamorphoses*. They would like to thank their family, professors, and voice teacher for helping them to foster their talents and passion.



Victoria (Tori) Kimball (she/her) is so excited to not only be working on her first show as a part of a production team, but also to be work-

ing on her first Shakespearean show! She was originally pretty daunted by the work of "the Bard", but her cast and crew has been very accepting and they were willing to meet her where she was. Her previous roles in theater include Rapunzel (*Into the Woods*), Ms. White (*Clue*), Anne Frank (*The Diary of Anne Frank*), Phoebe Zerwick (*The Trials of Darryl Hunt*), Mary Bailey (*It's a Wonderful Life*), and more. She hopes that you enjoy Delaware Shakespeare's very own, *Julius Caesar*.

Creative Team

Cassandra Alexander (Text Coach) (she/her) is honored to collaborate with this spectacular team. A Barrymore-Nominated actor, she has performed with Philadelphia Artists' Collective (PAC), Delaware Shakespeare, Tiny Dynamite, Alterra Productions, and Philadelphia Women's Theatre Festival. Previously, she served as the Text Coach for the 2023 Summer Festival production of *Macbeth* and the 2022 Community Tour production of *Twelfth Night: O Lo Que Quieras*. Cassie holds degrees in Theatre & Drama and Arts Management from Indiana University, although her love of classical theatre blossomed while studying at Shakespeare's Globe in London.

Ilycia Boatwright-Buffaloe (Costume Designer) (she/her) is excited to be designing again, as she is no stranger to Delaware Shakespeare. Recently, she had the pleasure of costume designing for InterAct Theater as well as Arden Theater Company's Barrymore-nominated show *Clyde's*. A graduate of Westchester University with a degree in Design, Tech, and Management, Ilycia launched her costume design company, B-Buffaloe, in the summer of 2019. B-Buffaloe specializes in performance wear for anyone looking to hit the stage. As an up-and-coming designer, Ilycia has worked with some of Philadelphia's best in drag and burlesque. Guided by her mantra, "size inclusion is not an obstacle or an option," Ilycia prides herself on designing for all people, regardless of shape or size.

Christina Foye (Musician) (she/her) is a recent graduate from Temple University '23. She has been playing Violin for 11 years and this is her first professional violin debut! She would like to shoutout her Violin teacher Ms. Linda for being strict and supportive with her to be able to grow as a violinist. She would also like to thank her Mom and Dad for always being supportive! Break legs to all cast and crew!

Isabella Gill-Gomez (Light Designer) (she/they) is a Latina technician, programmer, and light designer based in Philadelphia. Recent designs include *School Pictures* (Wilma), *Meet Me At Dawn* (Inis Nua), *Les Misérables* (The Haverford School), *Medea* (Community College of Philadelphia/Bryn Mawr College), *Esto No Tiene Nombre* (Intercultural Journeys), *Rocky Horror Picture Show* (Theatre Horizon), *At The Wedding* and *Much Ado* (Swarthmore College), and *Father Comes Home From The Wars Parts 1, 2 & 3* (Quintessence Theatre Group). All my love.

Marisa Gittelman (Production Manager) (she/her) is a Philadelphia-based Theatre Artist and Teaching Artist, holding a BA in Theatre Studies, Creation and Production from Temple University. Marisa has practiced in many roles in the world of education as well as theatre, working in the theatre world as a Stage Manager, Director, Actor, and Production Manager all over the Philadelphia area. Marisa is honored and filled with joy at another year running Del Shakes' Summer Fest production, and getting to create a strange and wonderful world with an incredible team - a world that will welcome any and all humans into the realm of Shakespeare. Many thanks to the friends, family, and incredible collaborators who support her and the world building we love to do!

Michael Hahn (Sound Designer & Composer) (he/him) Previous Del Shakes credits include: *Macbeth*, *The Tempest*, *Twelfth Night*, *Merry Wives of Windsor*, *Much Ado About Nothing*, *Henry V*, *Comedy of Errors*, *Taming of the Shrew*, *Hamlet*, *Two Gentlemen of Verona*. Off Broadway: *Maurice Hines Tappin' Thru Life* (New World Stages), *White Guy on the Bus* (59E Theaters). Regional: *The Exonerated*, *Ain't Misbehavin'*, *The Explorers Club* (Delaware Theatre Company), *Othello*, *An Iliad*, *As You Like It* (Lantern Theater Company), *Aladdin: A Musical Panto*, *Cinderella: A Musical Panto*, *Beautiful Boy* (People's Light).

Colleen Hughes (Intimacy & Choreographer) (she/her) has collaborated with artists from around the globe, including Maya Hawke on the official music video for "Thérèse," with over 5 million views on YouTube (also available on Apple Music); Samantha Shay at Tanztheater Wuppertal Pina Bausch in Germany; and immersive work with Virgin Atlantic's cruise line in the Mediterranean, and Punkdrunk's *Sleep No More* in NYC. Colleen is part of a team of thought leaders in the field of consent and intimacy work. As Director of Core Training at Intimacy Directors and Coordinators (IDC), Colleen led the development of the company's groundbreaking Consent-Forward Artist training program. She is currently working on a book entitled *A Volunteer From the Audience: Consent Work in Interactive Performance* that examines the role of agency in immersive performance.

Bailey Kung (Graphic Design) (they/them) is a former theater kid, a current enthusiastic theatre audience member, event manager, plant lover, estate sale maven, and crafty type. They have worked with Del Shakes in various capacities since 2016. Bailey does graphic design for Kismet Bagels and Gilda Café & Market in Philadelphia and serves on the steering committee for the Small Press Expo in Bethesda, MD.

MK Prophet* (Directing Apprentice) (they/she) is a Philadelphia based theater artist, and recent graduate of UArts with degrees in Musical Theater and Directing. Past local credits include: *Fun Home* (UArts, Director), *Urinetown* (Robby/ Assistant Choreographer). Regional: *Wizard Of Oz* (MSMT), *Something Rotten* (R&R Prod.) Shoutout to the immaculate community of artists at Del Shakes, you are magic.

Alex "Ra" Savage (Stage Manager) (they/she) This is Alex "Ra"'s second show with Del Shakes and she is so happy to be back! She is a theatre artist who received a degree in Theatre from West Chester University. Alex has worked in theatre admin, production stage management, performance, film production & content creation and is looking to branch out in the Philadelphia area!

Andrew Robinson (Set Designer) (he/him) is a graduate from Rowan University's Technical Theater and Design Program. Andrew has experience working in positions such as: scenic designer, associate scenic designer, scenic charge, and carpenter. He currently is working as a freelance scenic designer in the Philadelphia area.

Izzy Sazak (Community Care Liason) (they/them) is a mostly non-traditional creator, and doesn't often perform in "theaters." But in Philadelphia and Delaware you may have seen them perform in their house, at Pig Iron Theatre Company, Theatre Horizon, Lantern Theater Company, Fringe Arts, Mascher Space, First Unitarian Church, and Christ Church; in Rodney Square and Rockwood Park, as well as throughout Delaware via the Community Tour production of *Twelfth Night*, *O Lo Que Quieras*.

Olivia Segada* (Stage Management Apprentice) (she/they) This is Olivia's 1st production with Del Shakes! Olivia is a rising sophomore at Hofstra University, majoring in Drama Performance. Olivia has previously worked as an ASM for New Light Theatre in their productions of *Rent* (2022) and *Godspell* (2023). In high school, Olivia fulfilled many roles within Padua, Salesianum, and Ursuline Theatre, ranging from lighting design, leading the makeup departments at Salesianum and Padua, and acting. Previously, you may have seen her as Mrs. Trunchbull in Padua Theatre's

Matilda (2023) or as Pythio in Salesianum's *Head Over Heels* (2023). Olivia would like to thank her family and friends for their support, as well as Mariah, Tai, and Ra for this opportunity and mentorship!

Carol Vanzoeren (Props Designer) (she/her) has done theater since she was a kid and has covered all the bases; acting, directing, stage managing, set building, administration. She's also been a Del Shakes groupie since the inaugural production of *Midsummer* at Archmere in 2003. Del Shakes asked in 2017 if she'd be interested in designing props, and she has done so for several Community Tour and Festival shows since. Carol delights in designing props that serve the director's vision, the actors' performances, and the story we - actors AND audience - are telling together.

Tai Verley (Director) (she/her) is a NYC-born, Philadelphia-settled multifaceted artist. After attending Vassar College for undergraduate studies, Tai obtained her M.F.A. in Acting from The New School for Drama. Her acting credits include companies like the Delaware Shakespeare Festival (Community Tours - *The Merchant of Venice*, *Romeo & Juliet*, *Twelfth Night* *O Lo Que Quieras*), Delaware Theatre Company (*Saint Joan*), Arden Theatre Company (*The Snowy Day* and *Treasure Island*) and Philadelphia Artists' Collective (*Iphigenia at Aulis*). Her directing credits include academic institutions like Villanova, Arcadia University, and West Chester University, as well as professional companies like the Eagle Theatre (*Circle Mirror Transformation*), and again DelShakes (*Cymbeline - Community Tour*). She is currently the Artistic Director of Revolution Shakespeare, a small theatre company (in Philadelphia!!) which aims to deconstruct and decolonize the Bard's work. She is also an adjunct professor at the University of Pennsylvania. <3 Rumi - Mama loves you! <3

Donors

Delaware Shakespeare continues to thrive thanks to the kind support of these individuals and organizations. We gratefully acknowledge the support of our sponsors and friends. If you enjoy your evening of theatre, please consider supporting this great Delaware experience. Thank you.

* Indicates a donor who has given for five consecutive years

Corporate, Foundation, and Government Donors

\$50,000+

Longwood Foundation

\$10,000-\$49,999

Delaware Division of the Arts

General Operating Support

Maurice Amado Foundation

National Endowment for the Arts

Grants for Arts Project

New Castle County Cares

Welfare Foundation

\$1,000-\$9,999

Crestlea Foundation

Delaware Division of the Arts

Education Resource

Delaware Community Foundation

Fund for Women

Delaware Historical Society (In-Kind)

HMF Beaudoin Family Foundation

Janssen's Market

JP Morgan Chase Foundation

Kent County Fund for the Arts

Labware

M&T Charitable Foundation

Planet Ten (In-Kind)

PNC Bank

Swigg

The Shakespeare Fund

of Theatre League of Kansas City

Wilmington Alliance

\$100-\$499

A-1 Sanitation (in-kind)

Saul Ewing LLP

Sustained by Dana Monzo

Prospero's Circle

Prospero's Circle is comprised of individuals who support Delaware Shakespeare with gifts of \$1,000 or more. The Circle is named after one of Shakespeare's most famous characters, the magician on his magical island in *The Tempest*. At one point, Prospero draws a circle and steps into it to create some of his greatest magic. Supporters at this level can step into Prospero's Circle and allow Del Shakes to create even greater magic.

Juno Level (\$5,000+)

Hugh Atkins & Michele Schiavoni *

Susan & Joseph Guariano *

Laurel A. Riegel *

Julie & Jonathan Russ *

Ceres Level (\$2,500-\$4,999)

Pam Huxtable & Nick Johnson *

Frank & Shelley Tombari

George & Norine Watson *

Iris Level (\$1,000-\$2,499)

Anonymous (1)

Aldos & Susan Barefoot *

Elizabeth Bryson *

The Hon. Barbara D. Crowell *

Kimberly Duus

The Foulds Family Fund

Margaretta Frederick & Michael Martin *

Peter D. & Kate Gordon *

Patty & John Jacob *

Scott & Miranda Matthews *

Christina McCawley

Christine & Garrett Moritz

Alice D. Reilly *

Blake & Mitzi Rohrbacher *

David & Michelle Stradley *

Stephanie Sullivan & Nick Laping *

Anne L. Sulzbacher *

Carol VanZoeren

Individual Donors

\$500-\$999

Dan & Cathy Alexander *

Rossana Arteaga-Lopenza & Cliff Gardner

Mona B. Bayard

Robert & Sally Coonin *

Christopher A. & Ann M. Coons

Chris & Tom Ditzler *

Danni Van Drew & Grant Dick *

Lisa Gannon & Louis Hering

Michelle & Tom Hannum

Jonathan Jaffe *

Paula Janssen

Susan & Neil Kaye

Alfred Lance & Angelo Outlaw Jr.

Lisa & Marty Lessner *

Tizzy Lockman & John Collins

Dana Monzo

Charles & Cindy Nelson *

Stephen Nelson & Peter Vitale

Marcos & Karen Rivero *

Michael Rosen

Achille Scache & Laura Owens *

Michael & Sharon Schwartz *

Vanesa & Craig Simon

Lynne & Rusty Suher *

Danielle & Kevin Sullivan *

Joshua & Jin Twilley

Stephen & Tomoko Werbe *

David J. Wierz *

John Williams

\$250-\$499

Cassandra Alexander *

Mr. & Mrs. Thomas H. Anderson, III *

Stuart & Lucy Comstock-Gay *

Olga Crowther *

Robert & Marion Ehrlich

Sarah M. Ennis *

Dennis Gallagher

Mariah Ghant

Linda M. Heckert *

Ann Hriciga & Mike Coughlin *

Kevin & Sue Loney *

Celia Maurice

Heather & Steve McCall

Cecelia McCormick

Fern Mills

David Pasanek *

Karen D. Poore *

Carlos & Crystal Rodriguez II

Peter & Kathy Stoehr

Matthew & Janice Sullivan *

Tom & Sara Thompson

Robert Tombari & Peter Langlois

Marilyn Whittington

WIN A DEL SHAKES T-SHIRT!



SCAN QR CODE



OR GO TO
DELSHAKES.ORG/TSHIRT

COMPLETE OUR AUDIENCE SURVEY
TO ENTER THE NIGHTLY DRAWING

\$100–\$249

Jack Alexander
 Thomas & Mary Lou Ambro *
 Marianne & Chris Archbell
 David Azartouz
 Eric Barnaba
 Laura Bodien
 Mimi Boudart
 Matthew Breece
 Judith Calhoun *
 Joy Campbell
 Anne Carter Carlton
 Anne Colligan
 Charles & Judith Conway *
 Telita Crosland
 Larry & Sherilyn Crump
 Robert & Roma Dockhorn
 Doug Doerfler & Anne Ashbrook *
 Nancy Frampton
 Warren Frankenberger
 Howard & Liz Freedlander
 Kristin Froehlich
 Adam & Kim Ginsberg
 Adrian Greenwood
 Mr. & Mrs. Robert Grenfell *
 Bill Hardam & Lorena Meunier
 Mark & Nancy Hetterly *
 Nila & Douglas Hill *
 John Hynes
 David Ingram & Melanye Finister
 Cathy Jacob *
 Dorothy R. Jacobson *
 Barbara James
 Jamie & Claire Kegerise *
 Lynne & Fred Kielhorn *
 Dr. Sheridan Kingsberry & Stephen Kingsberry *
 Elinor L. Knodel *
 Kenneth Kolwicz & Svetlana Lisanti
 Lawrence Kraines
 Rob & Jean Krapf
 Mary Louise Kubacki *
 Gregory & Lynne Landrey *
 Richard & Marilyn Levin *
 Michael Long
 Tim Lutz & LeeAnn Srogi
 Carol & Gwynn Lyell *
 Jim & Joan March
 Steven & Carol Marino *
 Clara Mattucci
 Judith McDermott
 Eric Mills & Kristin Carberry

Richard Morelli & Pamela Stephani
 Maire Moriarty
 Mark & Cathy Parsells
 Richard & Eunice Pryor *
 Lourdes I. Puig *
 Janice & Leslie Reidel
 Jeffrey & Katherine Robleto *
 Robert Rudolph
 Irene Schuman
 Paul Schuman & Margaret Polaneczky
 Joanne Smeltz *
 Janice & Clifford Smith *
 Jennifer Spartin
 Stephanie Staats
 Nancy Steckel *
 Michele Weiner *
 Matthew Weinert
 Sue Weissinger *
 Bennett & Marianne White
 Mary Wilcosky *
 Marcelle Williams
 Beverly Wright
 Janet Wurtzel
 Patricia Zaharko
 Bill & Dory Zinkland

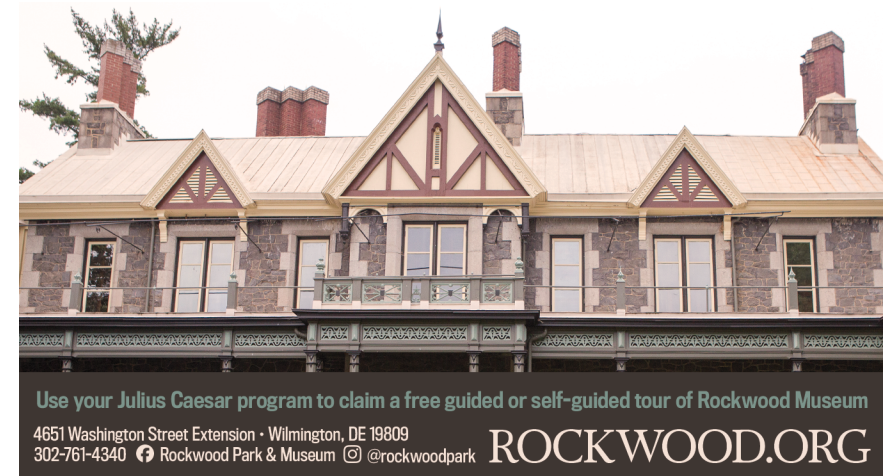
\$50–\$99

Regina Barry
 Lois Barth
 Rob & Joan Beatson
 Laila Blumenthal-Rothchild
 Christine Chastain-Warheit
 Stephen & Joan Chinnery
 Stephen & Deborah Colino
 Anne Colwell
 Andrew Cretella
 Gayle Dillman
 Kyle Kate Dudley
 Rebecca Fay
 Nathalie Freeman
 Barbara Germani
 Al & Gwen Gilens
 Lauren Greenwood
 Sharron Greenwood
 Judith Jennings & Dennis Matthews *
 Sharon Kelley
 Lawrence Kraines
 Janet Lindenmuth
 Rebecca Longenecker
 Camp Loomis
 Jessica Lynch

Julius Meisel & Nancy Devine
 Dana Metzger
 Eden Morgan
 Thomas Nesterak
 Gail Obenreder O'Donnell
 Fred & Vera Orthlieb *
 Marian Pione
 Larissa Ranbom
 Jane E. Rubini
 Donna Salek
 Bradley Sams
 William Sargent Jr.
 Elizabeth Sargent
 The Sharps
 Jonathan Silver
 Isheta Smith
 Geoff Snowman
 Steven Thorpe
 Greg & Judy Tigani
 Mr. & Mrs. Eugene Ventura
 Laura Viau
 Carol Villa
 Bob Weick
 Jeff Wilkinson
 Jennifer Williams
 Jimmy R. Wilson
 Miranda Wilson & Tim Spaulding
 Nancy Wingate
 David Wright
 Susan M. Zellner
 Steve Zimmerman & Laurie Ross *

\$1–\$49

Anonymous (2)
 Sasha Aber
 Joanne & Ray Abruzzese
 Harriet Ainbinder
 Evan Alban
 Rah Ali
 Rhonda Anderson
 Gillian Andrews
 Carol Arnett-Robbins
 Clay & Shannon Athey
 Mike & Cindy Barko
 Keith Barnaby
 Dr. Rabbi Michael & Dr. Elissa Green Beals*
 Janice Berg
 Martin Berg
 Sarah Berninger
 Elizabeth Bleacher
 Deborah Bosley
 Maureen & Bryan Bowman
 Debra Boyd
 Henry Brooks
 Steve Burgess
 Judith Calrert
 Katherine Caudle
 Sandra Chack
 Tamara Chandler
 Lynn & Greg Ciarlo
 Darree Clark
 Marjie Clement
 Ms. Jamie Colvett



Use your Julius Caesar program to claim a free guided or self-guided tour of Rockwood Museum
 4651 Washington Street Extension • Wilmington, DE 19809
 302-761-4340 📍 Rockwood Park & Museum 📷 @rockwoodpark **ROCKWOOD.ORG**

William Conlin
Byron Cooper
Matthew Cordrey
Alryan Cuaton
Travis Rosmarie Curhart-Fischbach
Herv & Jodi Dacosta
Stephen Dainton
Ashley SK Davis
Debbie Delahant
Michelle Della Fera
Steve Devlin
Tara DiGiacomo
Mark Dixon
Susan Domingos
Colleen Dougherty
Allison Driscoll
Kathleen Elliot
Linda Emerick
Beth Emmons
Maria English
Stephen Falchek
MJ Fernbacher
Christine Fischer
Gregory & Carla Fiske *
Debbie Fitchett
Lauren Fitzharris
Laura Florence & Megan Bushnell
Katherine Fluker
Mayra Focht
Jennifer Follett
Paul Gaskell
Steve Gozner
Ken Grant
Greyhound Daze

Debbie Gulick
Patty Haggerty
George Harding
Kelsey Hebert
Christine Hessler
Maria Higgins
Elliott Hoopes
Andrew Huber
Kelley Hummel
Brian Hund & Sarah Dobe-Hund
Carol Ireland
Corey Johnson
Karen Johnston
Carolyn & Frankie Jones-Bradshaw
Esther Joseph
Jane Joseph
Robyn Kantor
Namsimar Kaur
Paul & Eileen Keely
Dave Keifer
Carolyn King
Elisa King
Robert & Susan Kissell
Rebecca Klug
Richard & Lynn Koehler
Cindy Kohlmann
Matthew Kurth
Marki LeVere
Chad Lincoln
Karin Linton
Lee Lodyga
Barbara Macklem
Mika Mako
Ken Mammarella

Joy Manning
Rona Marquette
John & Debra Martin
Candice McAllister
Tim & Laura McCann
Michael McCann
Gillian & Shawn McCarren
Susan McCarthy
Mary McDonald
Mary Margaret McElduff
Kelsey McElduff
Rob McMahan
Diane E. McMinn
Jacin Meehan
Kanina Miller
Keri & Michael Morton-Wiedner
Lena Mucchetti
Margaret Mukai
Colin & Tracy Murphy
Brian Murphy
Catalina Natalini
Jessica Needles
J Paul Nicholas
Linda O'Neal
Charlotte O'Sullivan
John Patouhas
Chris Payne
Lucille Pollard
Jack Poppiti
Brent Porter
Debra Quillen
Justine Quirk
Gerald Radack
Nate Ragolia
David Randle
Karen Randolph
Marianne Reeves
Jennifer Rippon
Debra Roberts
Irene Rodriguez

Ronald Rogers
Ewa Rurarz-Huygens
Alison Ruth
Sarah Ryan
Maria San Miguel
Rebeca Sanchez
Allyson Sands
Jason & Melissa Scott
George Segeda
Tracy & Aaron Selekmán
Sheila Shaw
Carol Sisson
Ramya Sivakumar
Nikki Smiley
Kathleen Smith
Laura Smith
Katherine Spencer
Tom & Stephanie Steenkamer
Robert Stoddard
Cyndi Stouffer
John Stucker
Thomas Swanson
Christina Szczesiak
Kellie Tetrick
Kathy Thompson
Mike & Swathi Trotter
Mia Trotter
Carl & Jane Van Valkenburg
Victoria Vavala & David Gulick
Tai Verley
Anthony Vinci
Jackie Vogl
Missy Wanstall
Susan Warzel
Yulia Watters
Joseph Welch
Carla Wilson
Lauren Workman
Mary Young
James Zug

On-demand Monologue Coaching

with a member of the Del Shakes Artistic Squad



Izzy Sazak



Eric Mills



Cassie Alexander

IN-PERSON
or VIRTUAL!

1-hour personalized training sessions
delshakes.org/on-demand-monologue-coaching

Special Thanks

To all our friends at Delaware Historical Society, Delaware Theatre Company, Janssen's Market, New Castle County, Old-Fashioned Ice Cream Festival, OperaDelaware, Out & About, Philadelphia Artists' Collective, Philadelphia Scenic Works, Resident Ensemble Players - University of Delaware, Revolution Shakespeare, and Wilmington Brew Works.

And also to Suzanne Casey, Julie Gray, Ryan Grover, Joan Hamilton, Dena Kirk, Matthew Meyer, Brendan Moser, Jane Rattenni, Marina Rosaio-Roddy, and Loretta Spigel.

Antiracism

Delaware Shakespeare is committed to a work and audience environment in which all individuals are treated with respect and dignity. Delaware Shakespeare expects that all persons working, performing, attending, or otherwise conducting business connected to our activities will strive to be free of racial bias and prejudice, and be committed to eliminating racial harassment or racial transgressions. We reject all forms of racism as destructive to our mission, vision, values, and goals. We will pursue ongoing antiracism dialogue so that all can continue to grow.

Land Acknowledgment

Delaware Shakespeare performs on the traditional lands of the Lenni-Lenape people. We acknowledge them as the original stewards of this land. Del Shakes aims to bring our community together to explore our shared humanity. During today's performance, we invite you to consider how your humanity is interlinked with that of the Lenape people.

Barrymore Awards

Delaware Shakespeare is a proud participant in Theatre Philadelphia's Barrymore Awards program. The Barrymore Awards recognize professional theatre in the Greater Philadelphia region, honor local artists and theatre companies, and increase public awareness of the richness and diversity of our region's thriving theatre community.

Learn more at www.theatrephiladelphia.org.

Relaxed Performance (July 21)

Relaxed Performances provide a welcoming, "shush-free" environment that lets all patrons attend the performance and express themselves freely, without judgment or inhibition. This live theatre experience invites and encourages individuals with autism, ADD, ADHD, dementia, sensory sensitivities, medical complexities, physical accessibility needs, and anyone else who would appreciate a more relaxed theatre-going environment to enjoy the performance.

We encourage everyone to bring their full, authentic selves to these performances, with the knowledge that there may be a certain level of sound and/or movement in the audience during the performance.

As our show is performed outdoors, there is already an inherent amount of freedom for folks to move about and express themselves as needed, but even more so at these relaxed performances are audience members free to talk, vocalize, and leave seats during the performance as needed.

Please reach out to boxoffice@delshakes.org if you have any questions.

Practical Matters

Accessibility

The Delaware Shakespeare Summer Festival is wheelchair accessible. Accessible restrooms are available.

Bugs

Our grounds are sprayed with an all-natural mosquito repellent during Summer Festival weeks. For added protection, feel free to use the mosquito spray at one of our complimentary stations.

Cameras

Cameras and recording devices – yes, including cell phones – are strictly prohibited during the show. Feel free to snap away during pre-show entertainment and at intermission. And we love to see your photos! We use #delshakes.

Cell Phones

Please silence your cell phones during the performance.

Concessions

Our concession stand sells souvenir T-shirts, light refreshments, wine by the bottle at the Swigg Festival Wine Shop, and picnic food from Janssen's Market.

Feedback

We love to hear your thoughts and suggestions. Contact us at info@delshakes.org or at [Facebook.com/delshakes](https://www.facebook.com/delshakes).

Need help?

If at any time you have a question or need help, ask to see a staff member at our concession tent.

Pets

Sorry, no animals are permitted on the Festival grounds (except for specially-trained service animals).

Recycle Programs

If you like this program, please keep it – or you can return it to us at the concessions tent as you leave the park.

Restrooms

Follow signs to the restrooms beyond the gazebo, at the opposite end of the lawn from the mansion.

Safety

Please do not enter backstage areas during the production, and keep aisles clear for actors during the show.

Seating

Seating begins at the stage with blanket seating, followed by low-back "beach" chairs and high-back "lawn" chairs. We kindly request you follow the advice and guidance of our volunteer ushers as they try to create a space where everyone can see.

Smoking

Smoking is prohibited everywhere on the grounds of the Summer Festival.

Weather

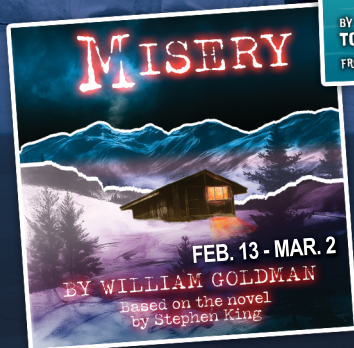
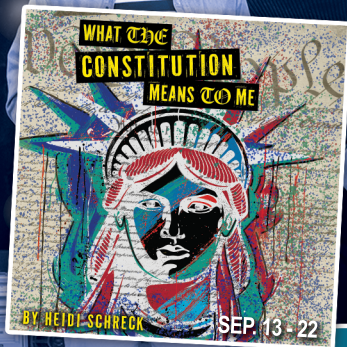
Performances continue in a light rain. In heavy rain, staff may call a 20-minute rain delay. If it is not possible to continue, the performance will be cancelled and rain checks are issued to all audience members. Lightning strikes within 10 miles of the park will result in the immediate cancellation of a performance.

Please Note

Delaware Shakespeare and Rockwood Park/New Castle County are not liable for any damages including, without limitation, direct, indirect, incidental, special, punitive, consequential or similar damages related to the use or misuse of alcohol during or after a performance.

rep
RESIDENT
ENSEMBLE
PLAYERS

Delaware's Resident Professional Acting Company
24/25 SEASON



Broadway quality shows at delightfully low prices!

UNIVERSITY OF
DELAWARE

Sponsored
in part by
Delaware
Division of the
Arts

ROSELLE CENTER FOR THE ARTS
NEWARK, DE | 302-831-2204
WWW.REP.UDEL.EDU