

DELAWARE  
**SHAKESPEARE**  
SUMMER FESTIVAL 2025



**ILLYRIA  
IS BACK**

**SEGUIMOS  
ADELANTE**



# TWELFTH NIGHT, O LO QUE QUIERAS

A new bilingual musical by    La nueva obra musical bilingüe de  
**LIZ FILIOS + TANAQUIL MÁRQUEZ**

**JULY 17-AUGUST 3, 2025**  
**ROCKWOOD PARK • WILMINGTON, DELAWARE**

# WIN A DEL SHAKES T-SHIRT!



**COMPLETE  
OUR  
AUDIENCE  
SURVEY  
TO ENTER THE  
NIGHTLY DRAWING**



**SCAN FOR SURVEY**



**DELAWARE SHAKESPEARE  
COMMUNITY TOUR**

## **Two Gentlemen of Verona**

**SEPT. 29-OCT.19 2025  
SITES THROUGHOUT DELAWARE**



# TWELFTH NIGHT, O LO QUE QUIERAS

A new bilingual musical by / La nueva obra musical bilingüe de  
**Liz Filios and Tanaquil Marquez**

Directed by **Andrew Watring**

Music Direction, Arrangements, and Orchestrations  
by **Michael Meketa Sanchez**

**Romello Huins**  
Set Designer

**Ayla Taffel**  
Props Designer

**Michael Hahn**  
Sound Designer

**Manny Chacon**  
Choreographer

**Cassandra Alexander**  
Text Coach

**Leo Mock**  
Intimacy/Fight Consultant

**Rebecca Kanach**  
Costume Designer

**Miranda Schad**  
Stage Manager

**Alyssandra Docherty**  
Lighting Designer

**Marisa Gittleman**  
Production Manager

# Summer Festival Sponsors and Partners



302.635.7055



## Honorary Producers

Susan and Neil Kaye



New Castle County | DE  
**Parks & Recreation**  
Live Healthy New Castle County

Delaware Shakespeare is supported, in part, by a grant from the **Delaware Division of the Arts**, a state agency, in partnership with the **National Endowment for the Arts**. The Division promotes Delaware arts events on **DelawareScene.com**.

Presented in partnership  
with New Castle County  
**Marcus Henry, County Executive**

# Cast List

---

Violeta .....	izzy sazak
Feste .....	Federica Andino-Vega
Olivia .....	Imani Moss
Orsino .....	James Ofalt
Sebastian .....	Alfonso Valdespino
Malvolio .....	Stevie Smith Iannettoni
Maria/Antonia .....	Nayeli DeJesus
Sir Toby Belch/Guard .....	Page Whitman
Sir Andrew Augucheek/Curio .....	Charlie Barney

## Understudies

Sarah “Bash” Bastian .....	Malvolio, Sir Toby Belch
Nayeli DeJesus .....	Violeta
Madison Luckey .....	Olivia, Maria
Cullen McCormick .....	Orsino, Sir Andrew
Isabel “Penn” Lucio Penn .....	Sebastian, Feste

## Board of Directors

Alfred Lance, President
Vanesa Simon, Vice President
Susan Guariano, At-Large
Mariah Ghant, Ex-Officio
Ellen Cappard, At-Large
George H. Watson, At-Large
Eric Mills, At-Large
Molly Cahill Govern, Emeritus
Greg Robleto, Emeritus

## Staff

Producing Artistic Director .....	Mariah Ghant
Development Director .....	Cassie Alexander
Business Manager .....	Bob Stineman
Communications and	
Marketing Manager .....	Liz Getman
Graphic Designer .....	Bailey Kung
Education and Community Outreach	
Coordinator .....	Damala LaVette

## Production

Community Care Liason and Covid Safety Officer .....	Blue Benét
Crew Lead/Show Supervisor.....	Katie Givens
Technical Director.....	Ethan Inglis
Asst. Technical Director .....	John Starmer
Master Electrician .....	Nick Wacksman
Audio Engineer .....	Russell Chissoe
Wardrobe Supervisor .....	Joshua Thorpe
Directing Apprentice .....	Jaya Basu
Stage Manager Apprentice .....	Caela Hiltz
Production Apprentices .....	Griffin Anderson
.....	Zivia Avelin
.....	Annie Zulick
Musician .....	Stephen Tipping
Festival Manager .....	Lyndsey Connolly
Box Office Manager .....	Sacha Bretzger
House Manager .....	Alyxander Yerger
Field Captain.....	Ryan Wolynetz

# On-demand Monologue Coaching

with a member of the Del Shakes Artistic Squad



izzy sazak



Eric Mills



Lex Thammavong

IN-PERSON  
or VIRTUAL!

**1-hour personalized training sessions**

[delshakes.org/on-demand-monologue-coaching](https://delshakes.org/on-demand-monologue-coaching)



For more than 60 years, we've maintained the highest quality foods, and superb customer service. Whether you're looking for gourmet or everyday, stop by our store to look!



**WWW.JANSSENSMARKET.COM**

3801 KENNETT PIKE, GREENVILLE, DE | 302.654.9941

# From the Director

---

*Twelfth Night, o Lo Que Quieras* is a musical that meets the moment. In an era of hyper-politicization, partisanship, and a distinct lack of authentic conversation, Liz Filios and Tanaquil Márquez came together to tell a story about a community in turmoil and the individual choices they make to change their world.

In adapting *Twelfth Night*, Tanaquil danced a deft line. She had to ensure the integrity of Shakespeare's original text and intention, create her own language of heightened verse and contemporary references—affectionately referred to as “Fake-speare”—and weave in her own beautiful Spanish translation. She achieved all of these goals with incredible skill, theatrical generosity, and comedic genius.

A musical succeeds or fails on the strength of its score, and Liz is a musical theatre wizard. Her compositions span dozens of genres, contain numerous references from across artistic disciplines, and, at their core, center truth and love. The brilliance of these two artists is a shining beacon that leads this production towards creative excellence and community care.

*“Compromiso means Commitment, my Lord - not Compromise.*

*It is a song of sacrifice, dedication, the courage to lay down one's life.”*

At its center, *Twelfth Night, o Lo Que Quieras* is a song of sacrifice and dedication. A love letter to those who are willing to fight and rage against a dangerous and violent system. Through immaculate songs and powerful language, we seek to fight, rage, and find a way to love through it all.

Enjoy the show.

– Andrew Watring



*Interior Illustrations by Miranda Schad*

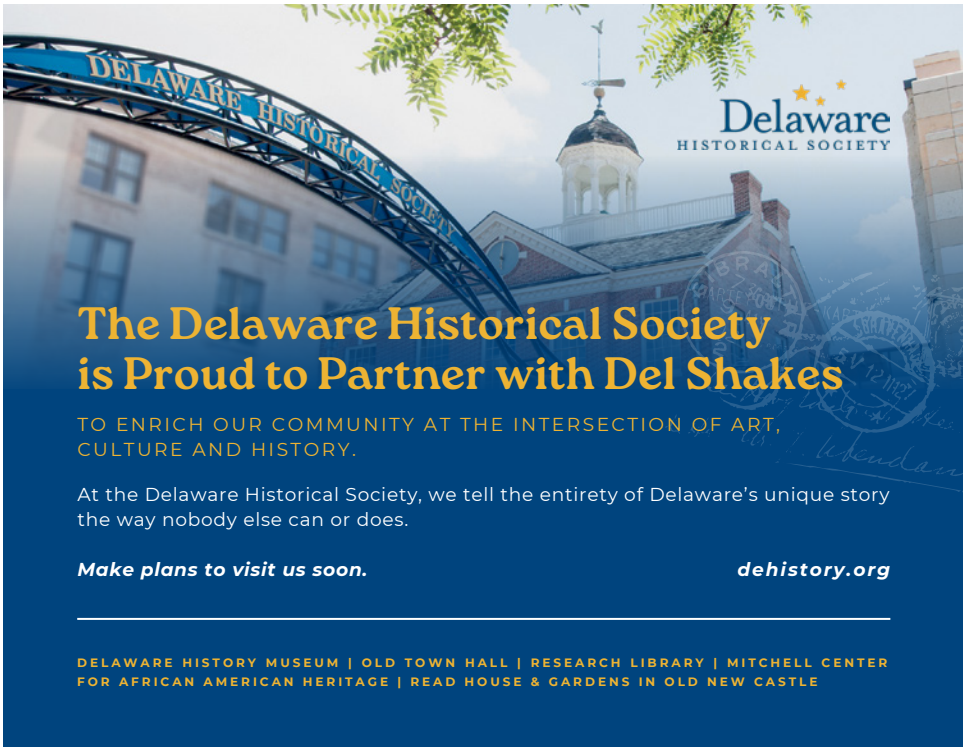
# Songs

## ACT 1

- “La Tormenta”
- “Buena Luz”
- “Care’s an Enemy to Life”
- “Illyria Is Back”
- “Illyria’s Gone Back”
- “Feste Protest”
- “La Cabaña De Sauce”
- “Sebastian’s Theme”
- “Make the Puppets Dance”
- “The Caper (We’re Bringing Malvolio Down)”
- “M.O.A.I.”
- “El Compromiso”
- “Estoy Despierta”

## ACT 2

- “La Tormenta (Reprise)”
- “A Degree To Love”
- “Sigo Adelante”
- “The Duel - Pt. 1”
- “Greatness (M.O.A.I. Reprise)”
- “The Duel - Pt. 2”
- “Antonia’s Song”
- “Por Favor”
- “Tis Not Madness”
- “Un Futuro Inmigrante”
- “La Reunión”
- “Finale”



**The Delaware Historical Society  
is Proud to Partner with Del Shakes**

TO ENRICH OUR COMMUNITY AT THE INTERSECTION OF ART,  
CULTURE AND HISTORY.

At the Delaware Historical Society, we tell the entirety of Delaware's unique story  
the way nobody else can or does.

***Make plans to visit us soon.***

***dehistory.org***

DELAWARE HISTORY MUSEUM | OLD TOWN HALL | RESEARCH LIBRARY | MITCHELL CENTER  
FOR AFRICAN AMERICAN HERITAGE | READ HOUSE & GARDENS IN OLD NEW CASTLE

# Characters / Synopsis

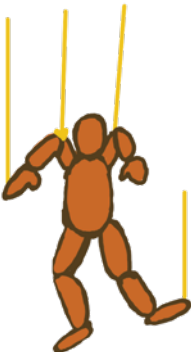
**Violeta** - Originally from Venezuela, Violeta travels to Illyria with her twin brother, Sebastian. The two are shipwrecked and separated on the shores of Illyria on the eve of a major political election. Upon realizing that her documents have been swept away in the ocean, Violeta encounters a Captain who teaches her English and disguises her as a young man called Cesario. As Cesario, she begins working for the newly appointed Duke and finds herself in a political love triangle with Orsino and Olivia. Violeta/Cesario claims devotion to Orsino, vowing to do his bidding despite his politics. Between election night and inauguration day (Twelfth Night), Violeta is swept up into the pursuits of love, power, and unity.



**Olivia** - A former organizer turned politician, Olivia is crushed when her term in office comes to an end, and Orsino is elected into power. She struggles to find her voice and continue fighting for migrant rights, while also navigating unwelcome declarations of love from Orsino and her budding attraction to Cesario/Violeta.

**Orsino** - Newly elected to power, Orsino is keen to “Bring Illyria Back” by pushing for a more conservative state and stopping the migrant population from crossing the borders. Despite their differing views, he is in love with Olivia, and employs Cesario/Violeta to help woo her.

**Malvolio** - Olivia’s Chief of Staff, Malvolio will do anything to assist his employer with her work, especially if it will give him his own leg up. Malvolio and Curio (Orsino’s Chief of Staff) team up to “pull the puppet strings” of Orsino and Olivia to gain power for themselves.



**Feste** - Having migrated from Ecuador, Feste is a prominent organizer in Illyria who uses her music to bring attention to migrant family separation. She encourages Cesario/Violeta to see the harm in Orsino’s policies, and works alongside Toby, Andrew, and Maria in their schemes.

**Sir Toby Belch** - Olivia’s uncle, Sir Toby is usually in a drunken stupor. He tries to push his friend, Sir Andrew, towards a marriage with Olivia with the selfish aim of taking all of Sir Andrew’s money and securing his residence in Olivia’s court.

**Sir Andrew Augucheek** - Terribly in love with Olivia, Sir Andrew is a wealthy friend of Sir Toby’s, who isn’t the brightest ducat in the bucket. Along with Feste, Toby, and Maria, Sir Andrew works to “bring Malvolio down” through a deceitful scheme, which leads to a near-duel over love.

**Curio** - Orsino’s Chief of Staff, Curio is friends with Malvolio, and the two work together to gain power for themselves through trickery.

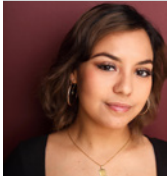
**Sebastian** - Violeta’s twin, Sebastian tries to reunite with his sister after being stranded in Illyria. He encounters Antonia and trusts in her to help him find a new path in Illyria.

**Maria** - As the right hand of Olivia, Maria is a frequent confidant of the politician. Fueled by her suspicion of Malvolio and Curio’s scheming, she works with Sir Toby and Feste to trick Malvolio with a false love letter “penned” by Olivia.



**Antonia** - A former ship captain who brought migrants to Illyria, Antonia finds Sebastian deserted on shore and is determined to help him reunite with his sister.

# The Cast



**Federica Andino-Vega** (Feste) (she/her) is ecstatic to be making her Delaware Shakespeare debut in this incredible production of *Twelfth Night O Lo Que Quieras*. She previously appeared in *Fun Home*

(Joan) and *World Classic* (Chachi) at the Fulton Theatre and *Sweetwater* (Eva Holiday) workshop with 11th Hour. She has a BFA in Musical Theater from Temple University and a recent Medical Interpreter Certification in which she hopes to help native Spanish speakers receive essential healthcare. Federica would like to thank her friends and family for their endless support, especially her parents for never letting her forget her Quiteña pride.



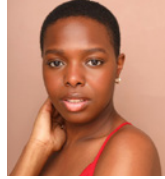
**Charlie Barney** (Sir Andrew Augucheek/Curio) (he/they) is a Philadelphia based actor and educator who has recently found joy in baking. Credits include *RENT*, *Once on This Island* (Arden) *Our Town*, *Fun*

*Home*, *Godspell*, *Shakespeare's R&J* (New Light Theatre), *Peter and the Starcatcher* (Delaware Theatre Company), and *Tell Sad Stories of the Deaths of Queens* (EgoPo). Much Love <3. Find them on Instagram at @charliebarney.



**Nayeli DeJesus** (Maria/Antonia, Violeta understudy, Acting Apprentice) (she/her) is a Dominican-American actress from Camden, NJ. She recently earned her BA from Rutgers University-Camden,

where she received the Martin Dillon Memorial Award for excellence in the arts. Thank you to my family and friends for the endless support, and to Andy for always believing in me. Previous credits include: *Fun With Jane* (Theatre Exile), *Las Mujeres* (Azuka Theatre), *NICHOS* (Esperanza Arts Center), and *Dani Who Made A Deal With the Sun* (Montgomery Theater).



**Imani Moss** (Olivia) (she/her) is a professional theatre artist and teaching artist based in Philadelphia, PA. She received her BFA in Musical Theatre from Temple University in 2021. Her most recent

credits include Joanne in *RENT* and Papa Ge (understudy) in *Once on This Island* at the Arden Theatre Company, the touring production of *Illuminating Bayard Rustin* with People's Light Theatre, and working with the Kimmel Center through Ensemble of the Arts. She enjoys karaoke nights with friends and hanging out with her cat, Lionel. Find her on Instagram at @missimanimoss or at imanimoss.com.



**James Ofalt** (Orsino) (he/him) is excited to be performing with Del Shakes. Recent credits include *The King in All's Well* (Shakespeare Clark Park), Paul in *Winter Wonderland* (Media Theatre), and A.

C. Peterson in *The Outsider* (Act II Playhouse).



**izzy sazak** (Violeta) (they/them) is a turkish-colombian-american trans-disciplinary artist, theater-maker, clown, and facilitator. they live (work, play, and grow), on Lenni Lenape Land (philadelphia).

izzy has had the pleasure of serving on the Artistic Squad since 2021, and made their Del Shakes debut as Violeta in the 2022 Community Tour Production of *...O Lo Que Quieras*. they are deeply honored and gratified to have gotten to tell Violeta's story for so many years. may all empires fall and borders dissolve. may all families be reunited, and our souls healed in community. ¡SÍ, SE PUEDE! izzy is also a company member of the visionary theater collective, Applied Mechanics. Recent Credits include, *Franklin's Key* (Pig Iron Theater Co.) *Home for the Holidays* (Delaware Theater Co.); *Poor Judge* (Pig Iron Theater Co.); *Pinocchio* (The Arden). Pig Iron/Uarts MFA Class of 2018, University of Virginia BA in Drama (2011) @dizzychavelx, izzysazak.com



**Stevie Smith Iannettoni** (Malvolio) (they/she) is so excited to be spending another summer with Del Shakes! They are a recent graduate from the now -extinct University of The Arts. Past show credits

include Don Berry in *James* by Bruce Walsh (dir. Russ Walsh), Arno in *Calvin Barrows* by Amir Gad (dir. Monti Cerabino), Soothsayer in *Julius Caesar* with Delaware Shakespeare (dir. Tai Verley), The Emcee in *Cabaret* at UArts (dir. Dan Kitrosser), Nick Bottom in *A Midsummer Night's Dream* at UArts (dir. Krista Apple) and more that you can see on their resume ;D. Thank you to this team and cast and my family (chosen & bio alike)! Enjoy the show!



**Alfonso Valdespino** (Sebastian) (he/him/el) is a first generation Mexican-American. Originally from the Chicagoland area, Alfonso is a Philadelphia based theatre artist. Alfonso currently

serves as the Artistic & Production Assistant at 1812 Productions. Alfonso is a proud member of the Philadelphia Latine Theatre Alliance. Other Credits: *Nichos* (Esperanza Arts Center), *Ulysses* (Elevator Repair Service @ FringeArts), *Siluetas* (Power Street Theatre), *La Picadura del Escorpión* (coLAB Arts), *This Is The Week That Is*, *Torch Song*, *The Flatlanders*, *The Play That Goes Wrong* (1812 Productions).



**Page Whitman** (Sir Toby Belch/Guard) (they/them) is a Philly based actor, theatre teaching artist, and queer community organizer. They are delighted to be making their Del Shakes debut this summer.

Page is a graduate of West Chester University with a BA in Theatre and concentration in Musical Theatre. Playful and curious at heart, they love discovering new ways to inspire laughter and deep, intentional thought. Most recently, Page has appeared on stage as Hector Holbrook in *Marjorie is Dead* (AzukaFest '25, PAPA Playwrights), Michael [Smee u/s] in *Peter Panto* (People's Light), Puck in *A Midsummer Night's Dream* (Winterthur Farm Hill Players), Crash in *Carroll County Fix* (Azuka Theatre).

## LABWARE® 8

Automate Your Laboratory  
with the Global Leader for  
**LIMS** and **ELN**



[www.labware.com](http://www.labware.com)

Does your arts  
organization  
need help?

**E/S**  
Equity Sings



EQUITY SINGS  
OFFERS PREMIUM  
SERVICES



**Nonprofit Performing Arts Consulting**

- Financial Stability
- Community Relevance
- Optimized Operations

**EQUITYSINGS.COM**

# FIRST STATE BALLET THEATRE

Pasha Kambalov, Artistic Director

## 25/26 SEASON at THE GRAND

**DRACULA**  
October 25 - 26

**UP FRONT  
ON MARKET**  
November 14 & 16

**THE NUTCRACKER**  
December 13-21

**DREAMS  
IN MOTION**  
February 21-22

**GISELLE**  
April 18-19

Tickets: (302) 652-5577 or [www.FirstStateBallet.org](http://www.FirstStateBallet.org)

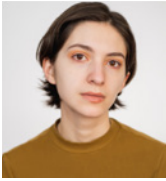


This program is supported, in part, by a grant from the Delaware Division of the Arts, a state agency, in partnership with the National Endowment for the Arts. The Division promotes Delaware arts events on [www.DelawareScene.com](http://www.DelawareScene.com).

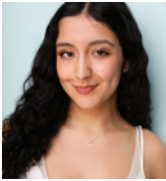
Photography by Tisa Della Voipe

# Understudies

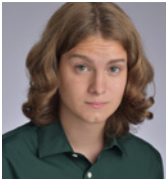
---



**Sarah "Bash" Bastian** (they/them) is a Philadelphia-based actor. They graduated from the University of the Arts in 2022 with a BFA in Musical Theatre and could most recently be seen in Philly Children's Theatre's devised production, "An Idea," at the Please Touch Museum.

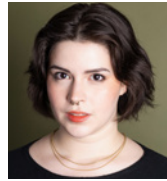


**Madison Luckey** (she/her) is a recent graduate of Temple University / The University of the Arts. Previous credits include Margo Crawford in *Bright Star* (Candlelight Dinner Theater), Sor Juana Inés De La Cruz in *Las Mujeres* (AzukaFest), and Depression in *Dear Mr. C* (Polyphone Festival). She'd like to thank her friends and family for their continued love and support! Find her on Instagram at @madsluckey.



**Cullen McCormick** (Acting Apprentice) (he/him) is making his Del Shakes debut! Cullen is beyond grateful to be a part of this production of *Twelfth Night*, *O Lo Que Quieras*!

A junior at Temple University (go owls!!!), he very much enjoys the privilege to see new works in and around the Philadelphia area - so to get to be a part of a new work is bananas to him. Having the opportunity to be a part of Delaware Shakespeare's apprenticeship program has provided him with a wealth of knowledge that he will cherish for the rest of his life. Temple University: *Rock of Ages* (Ens.), *Footloose* (Bickle, Ens.), *Hunchback of Notre Dame* (Clopin), *Poker in a House With Women* (Ben). Endless thanks to the creative team, cast, front of house, his family, and the I-95 highway for its continuous reminders for him to remain grounded and present in troubling times. Support local theater!



**Isabel Lucio Penn** (they/them, he/him) is a Philly based actor who is thrilled to be involved in their first production with Del Shakes. They have most recently worked with the Pennsylvania Renaissance

Faire on their stage combat track, and were part of the 2024 Musical Theater class at University of the Arts (RIP). He'd like to thank his wonderful partner Carl and his friends and family for their love and support: couldn't do this without them!

# Creative Team

---

**Cassandra Alexander** (Text Coach) (she/her) is honored to have the opportunity to return to this beautiful piece in collaboration with this excellent team. A Barrymore-Nominated actor, she has performed with Philadelphia Artists' Collective (PAC), Delaware Shakespeare, New Light Theatre, Delaware Theatre Company, and Tiny Dynamite. Previously, she served as the Text Coach for the 2024 Summer Festival production of *Julius Caesar*, the 2023 Summer Festival production of *Macbeth* and the 2022 Community Tour production of *Twelfth Night*, *O Lo Que Quieras*. Cassie holds degrees in Theatre & Drama and Arts Management from Indiana University, although her love of classical theatre blossomed while studying at Shakespeare's Globe in London.

**Jaya Basu** (Directing Apprentice) (they/he) is a multi-disciplinary theatre artist based near Washington DC. They are an undergraduate student at Washington College studying Theatre and English, where they are going into their fourth year. Washington College credits include: *To Survive or To Live*, a playwriting SCE by Faith Jarrell - Director; *The Lightning Thief* - Assistant Director; *The Geometry of Love* - Music, lyrics, book, producer, music director; *Prometheus Burning* - Stage Manager; *Bon Iver Fights a Bear* - Costume designer; *On the Verge* - Sound designer; *Romeo and Juliet* - Father Laurence, Benvolio; *True West* - Saul Kimmer; Montgomery College Summer Dinner Theatre: *Cabaret* - stage manager; *The Prom* - Costumes intern; *Something Rotten* - Costumes intern.

# Creative Team

---

**Blue Benét** (Community Care Liason and Covid Safety Officer) (they/them) is a Philly-based anti-disciplinary visual artist, educator, and a community organizer focusing on care, safety, and disability justice. They have two MFAs, which they find silly, and, while their work can be seen in shows throughout the Philadelphia region, you're more likely to catch them editioning handmade paper works for other artists at Paper Think Tank or throwing down for collective liberation with their comrades in the Philly streets.

**Emanuel “Manny” Chacon** (Choreographer) (he/him) is a dancer and choreographer from Wilmington, DE. Known for his blend of Capoeira and various dance styles, his diverse exposure to movements has developed a distinct style reflecting diversity and culture. While attending the University of Delaware, he pledged Lambda Sigma Upsilon Latino Fraternity, Inc. Here, his performance experience grew competing regionally and nationally. In 2016, Manny was casted in “Step Afrika!”, becoming the first Latino casted in the company's history and earning the opportunity to tour across 45 states and nearly 20 countries. Today, he is the Assistant Director of Dance at Villanova University.

**Alyssandra Docherty** (Lighting Designer) (she/her) is a two-time Barrymore Award-winning lighting designer based in Philadelphia. After graduating from DeSales University, she continued her training as an apprentice at Goodspeed Musicals in Connecticut. She has toured internationally with Koresh Dance Company and BalletX to stages in Belarus, Mexico, Bermuda, Serbia, Italy, and all across the USA. Recently, her designs have been seen at Arden Theatre Company, Pennsylvania Shakespeare Festival, Delaware Theatre Company, Walnut Street Theatre, Virginia Stage Company, Kun-Yang Lin/Dancers, and Brian Sanders' JUNK among others. Her work has been recognized with Barrymore and Ostrander Award nominations in Philadelphia and Memphis respectively. [www.alyssandradocherty.com](http://www.alyssandradocherty.com)

**Liz Filios** (Writer) (she/her) is a Philadelphia-based actor, musician and teaching artist. She has performed in Città della Pieve, Italy; Chennai, India; Cape Town, South Africa and at the Edinburgh Fringe Festival in Scotland. Regional credits include: the Kennedy Center, the Arden Theatre, Wilma Theater, Walnut Street Theatre, People's Light, Inis Nua, Lantern Theater, Del Shakes, Theatre Horizon, and the Bearded Ladies Cabaret. She has composed, sound designed and music directed for the Folger Theatre, Chicago Shakespeare Theatre, Pennsylvania Shakespeare Festival and Theatre Exile, and has appeared in concert at Joe's Pub, The Kimmel Center, FringeArts, Qudamani Summer Institute, Bang on a Can Music Marathon, and in David Lang's Symphony for a Broken Orchestra. She is the Director of Artist Training and a company member at People's Light. Liz also teaches music, acting and voice at Arcadia University, Bala House, and the Pig Iron School for Advanced Performance Training. Liz is a graduate of the University of Michigan, an Independence Foundation Fellow, a Barrymore Award winner, a Helen Hayes Award nominee and recipient of the F. Otto Haas Award for Emerging Theatre Artist. Deepest gratitude to Mariah, Tana, Andrew, David, Robi, Ximena, Patricio, Peter and Michael for their invaluable contributions to this score. For Isa.

**Marisa Gittelman** (Production Manager) (she/her) is a Philadelphia based Theatre Artist and Teaching Artist, holding a BA in Theatre Studies, Creation and Production from Temple University. Marisa has practiced in many roles in the world of education as well as theatre, working in the theatre world as a Stage Manager, Director, Actor, and Production Manager all over the Philadelphia area. Marisa is honored and filled with joy at another year running Del Shakes' Summer Fest production, and getting to create a strange and wonderful world with an incredible team - a world that will welcome any and all humans into the realm of Shakespeare. Many thanks to the friends, family, and incredible collaborators who support me and the world building we love to do!



JOIN THE

# Wilmington Children's Chorus

## Opportunities for all ages!



**July - August 31:** Open enrollment period for children ages 4-7. No audition required - just sign up for one of our free programs!



**September 7 & 9:** Auditions for children ages 8+. Openings in all ensembles for singers of all ability levels!

**Learn more and join the WCC family today!**  
[www.WilmingtonChildrensChorus.org](http://www.WilmingtonChildrensChorus.org)

# Creative Team

---

**Michael Hahn** (Sound Designer) (he/him) is thrilled to be welcomed back as the Sound Designer. This is Michael's 12th year with Del Shakes! Previous Delaware Shakespeare design and composition credits include: *Julius Caesar*, *Macbeth*, *Twelfth Night*, *Merry Wives of Windsor*, *Much Ado About Nothing*, *Henry V*, *Comedy of Errors*, *Taming of the Shrew*, *Hamlet*, *Two Gentlemen of Verona*. Off-Broadway: *Maurice Hines Tappin' Thru Life* (New World Stages), *White Guy on the Bus* (59E Theaters). Regional: *The Exonerated*, *Ain't Misbehavin'*, *The Explorers Club* (Delaware Theatre Company), *Othello*, *An Iliad*, *As You Like It* (Lantern Theater Company), *Aladdin: A Musical Panto*, *Cinderella: A Musical Panto*, *Beautiful Boy* (People's Light). Michael Hahn is also a singer/songwriter who releases original music at [momfearsmymusic.bandcamp.com](http://momfearsmymusic.bandcamp.com).

**Caela Hiltz** (Stage Manager Apprentice) (they) is a Junior Design Technology major currently studying at DeSales University. They are so excited to join Delaware Shakespeare for this enchanting reimaging of Shakespeare's *Twelfth Night*.

**Romello Huins** (Set Designer) (he/him) Romello is a Brooklyn-native scenic designer whose work spans regional theater, Off-Broadway, and Broadway. His designs have appeared in *Witch* (Yale Cabaret), *Book of Lucy* (Brown Trintity Rep), and *Lady Day at Emerson's Bar & Grill* (NC Theater). He's assisted on Broadway's *New York, New York*, *Ohio State Murders*, and *The Piano Lesson*, and at *The Public's Merry Wives* and *Hamlet*. Associate credits include *Sunday in the Park with George* (Pasadena Playhouse), *Fences* (Crossroads), and *The Pianist* (George Street Playhouse). Romello received the inaugural August Wilson Award in Theater Design and is the first August Wilson Fellow in Scenic Design at the Eugene O'Neill Theater Center. His work on *The Piano Lesson* is archived by the National Museum of African American History and Culture. He holds a BFA from UNC School of the Arts and is pursuing an MFA at the David Geffen School of Drama. IG: @rdhdesign

**Rebecca Kanach** (Costume Designer) (she/her) is excited to work with Del Shakes for the first time. A Barrymore-winning designer, she has been a fixture in the Philadelphia theater scene and previously served as adjunct faculty at the University of the Arts. She is a founding member and resident designer of The Bearded Ladies Cabaret and a company member of Lightning Rod Special. MFA, NYU Tisch | Proud member of USA 829 | Upcoming: *Once* (New Light Theatre), *Hansel und Gretel* (Julliard Opera) | Recent credits: *Beards on Ice* (The Bearded Ladies Cabaret), *Mabeline: The Greenmaissance* (Bearded Ladies), *Peter Panto* (People's Light), *Nichos* (Teatro Esperanza), *Nosejob* (Lightning Rod Special).

**Tanaquil Márquez** (Writer) (she/her/ella) is a bold and innovative Latina artist who is passionate about celebrating the Latine and migrant voice through bilingual work. She has created original work and self-produced plays in both Spanish and English, building a bridge between her shared culture and communities. Tanaquil is the Director of Education at 1812 Productions and a member of 1812's Artistic Core. Tanaquil is the recipient of the (2022) Pew project grant for *Nichos*, a finalist of the (2023) F. Otto Haas Award for Emerging Artist and a recipient of the (2025) Independence Foundation Arts Fellowship. She served as Associate Artistic Director for Teatro del Sol and was the Artistic Director of the interim bilingual theater company Teatro Esperanza in New Brunswick, New Jersey. During her tenure at Teatro Esperanza, Tanaquil hosted workshops and oral history interviews with the migrant community to develop original pieces for New Brunswick's monthly Mercado events. She has also created performances for the opening ceremonies for RH Doaz's mural *As Birds on Pinions Free* (2019) and Leon Rainbow's mural *A Journey Forward* (2021). In the past year, her work has been produced at Teatro Esperanza (*Nichos*, a multidisciplinary theater creation in collaboration with the Mexican migrant community in Philadelphia), Montgomery Theatre (*Dani Who Made A Deal with the Sun*, a bilingual children's musical) and CoLab Arts (*La Picadura del Escorpion*). Her upcoming production co-created with Eliana Fabiyi, *La Otra*, will premiere this September at the Fringe Festival with 1812 Productions and Fringe Arts.

**Michael Meketa Sanchez** (Music Direction, Arrangements, and Orchestrations) (he/him) is a composer/orchestrator/music director based in Pittsburgh, Pa. He's so excited to join Del Shakes for this exciting new musical. Recent credits as composer: *Third Louise of the Gallery* (2024 NYU Opera Workshop), *Kalopsia* (2017 & 2021 Co-Lyrics/Orchestrations New Hazlett Theater), *The Axeman's Jazz* (2019), *Dog God* (2018), *Songs of Suffrage* (2021 Seton Hill University), and *What Makes The Season* (2020 Cal U of PA). As arranger/orchestrator: *Dreamgirls* (2024 Broadway Sitzprobe Experience/Lincoln Center), *Somewhere Over The Border* (2023 City Theater/2024 People's Light), *Hair* (2022 Cortland Rep), *Clicqout: A Revolutionary Musical* (2022 Arts Center of Coastal Carolina), *It Had To Be You* (2021 Winnepesaukee Playhouse), *Die Young: The Ke\$ha Romeo & Juliet* (2020), *Ramona* (2020), *Assistants* (2019 Orchestrations [off b'way debut!]). As music director: *The SpongeBob Musical* (2024), *If/Then* (2024), *Chicago* (2023), *Dreamland* (2023), *Anyone Can Whistle* (2023). NYU Musical Theatre Writing Program Graduate! Much love to my parents, Sarah, and Zoey. Thanks to my incredible collaborators Liz, Tana, and Andrew! meketamusic.com

**Leo Mock** (Intimacy/Fight Consultant) (they/he) is a theatre-maker, consent educator, and intimacy choreographer. Leo is thrilled to return to Del Shakes after performing in last fall's community tour production of *The Winter's Tale*. He most recently provided intimacy choreography for *Turds in Hell* (EgoPo) and you can find them clowning around on various stages about town. You can find Leo's writing on intimacy and Trans representation, advocacy, and performance in *The Intimacy Coordinator's Guidebook* and *Queering the Stage*.

**Miranda Schad** (Stage Manager) (she/her) is so happy to be back for her second show with Del Shakes and for the summer festival. She is a theatre creator in the DE, MD, and PA area. Her most recent works include *The Brothers Grimm Spectaculathon* (Young People's Theatre Program), *Stompin' at the Savoy* (Delaware Theatre Program), *Our Tour* (New Light Theatre), and The Delaware Young Playwrights Festival. She'd like to thank the cast, crew, her family, and as always; Michael Devereaux.

**Ayla Taffel** (Props Designer) (they/them) is a multidisciplinary artist working as a props artisan, electrician, lighting programmer, and stage manager based in the Philadelphia area. Select credits include: *Sad Boys in Harpyland* (Fringe-

Arts), *The Comeuppance* (Wilma Theater), *the book of lucy* (Brown/Trinity MFA), *Rent* (Yale University), *Sueño* (Trinity Repertory Company), *The Henriad* (Brown/Trinity MFA), and *The 39 Steps* (Constellation Theatre Company). Ayla serves as the Head Electrician at FringeArts and the Assistant Head Electrician at The Wilma Theater. aylataffel.wixsite.com/ayla

**Stephen Tipping** (Musician) (he/him) is a percussionist and educator in the Greater Philadelphia Region. He performs and teaches an extensive scope of musical genres, including the marching arts, classical percussion, jazz and pop drumset, and steel pan. He has performed across the continental US and internationally. Stephen is a member of the Philadelphia-based percussion quartet Phil-A Rhythm and is the drummer for the Wilmington-based shanty rock band Captain's Daughter. Stephen is a member of AFM Local 21, PAS, and NAFME. Stephen currently serves as Instructor of Percussion at Delaware State University (Dover, DE), Core Faculty at The Music School of Delaware and is the percussion coach for the Delaware Youth Symphony Orchestra. Stephen is regularly seen in theaters, concert halls, and schools throughout the region. stephentipping.com

**Andrew Watring** (Director) (Andrew) is a Philly-based Black Trans Object-theatre-creator, director, award-winning playwright, producer and performer, originally from sweet home Huntsville, Alabama. Andrew's career has been dedicated to the creation and continued cultivation of *Shakespeare is a White Supremacist*, a theatrical ritual grounded in Shakespeare's colonizing effect on the American theatre; most recently staged with Main Street Players (Miami-Dade, FL). Select directing credits include: *the book of lucy*, *RENT*, *Angels in America*, *The Henriad*, *Richard III*, *White Noise*, *Hamletmachine*, *Passing: A Stage Play*, *Coriolanus*. Andrew was a member of the Directors Lab North; graduate of the Theatre Lab Life Stories Institute; an Honored Playwright at the New South Young Playwright's Festival. Andrew founded and served as the Artistic Director of the Fractal Theatre Collective, an anti-capitalist arts organization that embraced community-led, direct action as an integral element of theatrical design. Andrew holds a BA in Theatre from American University and an MFA from Brown University / Trinity Repertory Company. Andrew serves as People's Light's Director of Community Programs and Associate Producer. andrewwatring.com

# rep

RESIDENT  
ENSEMBLE  
PLAYERS

*The professional regional theatre company in residence at the University of Delaware.*



## ANNOUNCING OUR 25/26 SEASON

SEPT. 5 - SEPT. 21

### EVERY BRILLIANT THING

By Duncan Macmillan  
With Jonny Donahoe

OCT. 30 - NOV. 16

### AND THEN THERE WERE NONE

By Agatha Christie

FEB. 12 - MAR. 1

### ART

By Yasmina Reza  
Translated by  
Christopher Hampton

APR. 9 - APR. 26

### VANYA AND SONIA AND MASHA AND SPIKE

By Christopher Durang



*"the best theatre in the state,  
if not the region."*  
Broadway World

Sponsored in part by:  
Delaware  
Division of the



ROSELLE CENTER FOR THE ARTS  
(302) 831-2204 | NEWARK, DE  
[WWW.REP.UDEL.EDU](http://WWW.REP.UDEL.EDU)



# Donors

Delaware Shakespeare continues to thrive thanks to the kind support of these individuals and organizations. We gratefully acknowledge the support of our sponsors and friends. If you enjoy your evening of theatre, please consider supporting this great Delaware experience. Thank you.

\* Indicates a donor who has given for five consecutive years

## Corporate, Foundation, and Government Donors

### \$50,000+

Longwood Foundation

### \$10,000-\$49,999

Delaware Division of the Arts:  
General Operating Support  
Laffey-McHugh Foundation  
Maurice Amado Foundation  
Welfare Foundation

### \$1,000-\$9,999

Crestlea Foundation  
Delaware Community Foundation  
Delaware Historical Society (In-Kind)  
Fund for Women  
Theatre League of Kansas City  
JP Morgan Chase Foundation  
Janssens Market  
Kent County Fund for the Arts  
Delaware Division of The Arts:  
Education Resource  
PNC Bank

### \$100-\$499

A-1 Sanitation (In-Kind)  
JP Morgan Chase Foundation  
Swigg Wine



## Prospero's Circle

Prospero's Circle is comprised of individuals who support Delaware Shakespeare with gifts of \$1,000 or more. The Circle is named after one of Shakespeare's most famous characters, the magician on his magical island in *The Tempest*. At one point, Prospero draws a circle and steps into it to create some of his greatest magic. Supporters at this level can step into Prospero's Circle and allow Del Shakes to create even greater magic.

### Juno Level (\$5,000+)

Anonymous (1)  
Laurel A. Riegel \*  
Julie & Jonathan Russ \*

### Ceres Level (\$2,500-\$4,999)

Hugh Atkins & Michele Schiavoni \*  
Elizabeth Bryson \*  
Susan & Joseph Guariano \*  
Pam Huxtable & Nick Johnson \*  
George & Norine Watson \*

### Iris Level (\$1,000-\$2,499)

Anonymous (1)  
The Hon. Barbara D. Crowell \*  
Kimberly Duus  
Margaretta Frederick & Michael Martin \*  
HMF Beaudoin Family Foundation  
Christina McCawley  
Scott Mills  
Anne Rawnsley  
Alice D. Reilly \*  
Anne L. Sulzbacher \*  
Frank & Shelley Tombari  
Carol VanZoeren

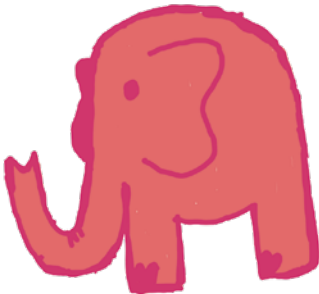
# Individual Donors

## \$500-\$999

Anonymous (2)  
Vera Belger  
Stuart & Lucy Comstock-Gay \*  
Lindsey DiSabatino  
Chris & Tom Ditzler \*  
Sarah M. Ennis \*  
Drew Fennell & Lisa Goodman  
Tizzy Lockman & John Collins  
Nancy B. & Matt Lynch  
Silvia Martinez & David Krantz  
Fern Mills  
Stephen Nelson & Peter Vitale  
Blake & Mitzi Rohrbacher \*  
Stephen Scheib & Alex Johnson  
Michael & Sharon Schwartz \*  
David & Michelle Stradley \*  
Danielle & Kevin Sullivan \*  
Stephanie Sullivan & Nick Laping \*  
Florence Waibel Fund  
Stephen & Tomoko Werbe \*

## \$250-\$499

Dan & Cathy Alexander \*  
Cassandra Alexander \*  
Kristin & Rob Allison  
Mr. & Mrs. Thomas H. Anderson, III \*  
Mona B. Bayard  
Nancy Boykin  
Stephen & Joan Chinnery  
Christopher & Ann Coons  
Michael Coughlin & Ann Hriciga \*  
Roma Dockhorn  
Melinda Duncan  
Robert & Marion Ehrlich  
Warren Frankenberger  
Mariah Ghant  
Peter D. & Kate Gordon \*  
Linda M. Heckert \*  
Sarah & Rick Heins  
Heather Kinney



Kassandra Lance  
Janet Lindenmuth \*  
Kevin & Sue Loney \*  
Erin M. McDonald \*  
Christine & Garrett Moritz  
Charles & Cindy Nelson \*  
Marcos & Karen Rivero \*  
Vanessa & Craig Simon  
Peter E. Stoehr  
Lynne & Rusty Suher  
Matthew & Janice Sullivan \*  
Thomas & Sara Thompson  
Robert Tombari & Peter Langlois

## \$100-\$249

Anonymous (3)  
Thomas & Mary Lou Ambro \*  
Charles Attig & Kellie Tetrick  
Arthur Ayres  
Eric Barnaba  
Stephanie Bogart  
Mimi Boudart  
Ed & Julie Breiner  
Susan Bryson  
Matt Cahill  
Anne Carter Carlton  
Tetila Crosland  
Olga Crowther  
Norma Cusick  
Jan Daily  
Daniel DeLuzio  
Steve James Devlin  
Doug Doerfler & Anne Ashbrook \*  
Kristin Froehlich  
Dennis Gallagher  
Barbara Germani  
Susan Getman  
David & Kathy Gittelman  
Adrian Greenwood  
Lisa Guariano  
Victoria & David Gulick  
Bill Hardam & Lorena Meunier  
Nila & Douglas Hill \*  
Solveig Holum  
Nancy Hough  
David Ingram & Melanye Finister  
Dorothy R. Jacobson \*  
Barbara James  
Heather Jefferson  
Jan Jessup  
Lynne & Fred Kielhorn \*  
Dr. Sheridan Kingsberry  
& Stephen Kingsberry \*  
Elinor L. Knodel \*  
Rob & Jean Krapf  
Mary Louise Kubacki \*  
Alfred Lance  
Gregory & Lynne Landrey \*  
Eric & Diane Leichter  
Richard & Marilyn Levin \*

Allison Levine  
 Gwynn Lyell  
 Ryan Mallgrave  
 David Margolies & Sheila Hochhauser  
 Steven & Carol Marino \*  
 Ann Lyn Martin  
 John & Cecelia McCormick  
 Judith McDermott  
 George Miller  
 Eric Mills & Kristin Carberry  
 Richard Morgante & Edward Hale  
 Thomas W. Nesterak  
 David Pasanek \*  
 Richard & Eunice Pryor \*  
 Angela Pugh  
 Janice & Leslie Reidel  
 Michael Rosen  
 Paul Schuman & Margaret Polaneczky  
 Joanne M. Smeltz \*  
 Janice & Clifford Smith \*  
 Thym S. Smith  
 Steven & Jennifer Spartin  
 Carol N. Stradley  
 Laura Sturgeon  
 The Happy Bagpiper  
 Luisa Torelli  
 Mr. & Mrs. Eugene Ventura  
 Maria Viscount  
 Weiman/Ryan Charitable Fund  
 David Wierz  
 Mary Wilcosky \*  
 Evelyn Williams  
 Janice Willis  
 Janet Wurtzel  
 Patricia Zaharko  
 Bill & Dory Zinkland



#### **\$50-\$99**

Anonymous (1)  
 Harriet Ainbinder  
 Kathy & Jim Berg  
 Laila Blumenthal-Rothchild  
 Bradley & Karen Bush  
 Ellen Casson  
 Daniel Cole  
 Joan D. Daly  
 Theresa de Rubertis  
 Gayle Dillman  
 Elena Filios  
 Bob France & Lynn Joos  
 Paula L. Gatos  
 Sal Guariano  
 Barbara Harbin  
 Gilda & Charles Jennings  
 Richard & Lynn Koehler  
 Lawrence Kraines  
 Matthew Kurth  
 Alice L. Lewis  
 Jim & Joan March  
 William C. Martin  
 Tim & Laura McCann  
 Jane McElduff  
 Julius Meisel  
 Madeline Miller  
 Richard Morelli & Pamela Stephani  
 Maryanne Murray  
 Karen D. Poore, ChFC  
 Carol Powell  
 Lourdes I. Puig \*  
 Bradley Sams  
 Isheta Smith  
 Nancy Steckel \*  
 Alison & Dan Thompson  
 Carol P. Villa & Carmine A. Villa  
 Melissa Wanstall  
 Christina Webster  
 Sue Weissinger \*  
 Jeffrey Wilkinson  
 John L. Williams  
 Miranda Wilson & Tim,  
 Ellison, & Cyrus Spaulding  
 David Wright  
 Robert B. Young  
 Steve Zimmerman & Laurie Ross \*

**PRECISION**  
 COLOR GRAPHICS

**goPCGnow.com**

**1401 TODDS LANE**  
**WILMINGTON, DE 19802**

**(302) 661-2595**

**\$1-\$49**

Anonymous (7)  
Joanne & Ray Abruzzese  
Jack Alexander  
Donovan Anderson  
Bridget Antalek  
Krista Apple & Scott Klaum  
Kaylin Ball  
Michael Barko  
Nancy Barnes  
Christine Barrett-Miller  
Lois Barth  
Kourtney Bastianelli  
Dr. Rabbi Michael & Dr. Elissa Green Beals \*  
John Beidelman  
Debra Boyd  
Norma Brennan  
Lori Buckey  
Stephen M. Burgess  
Dana Buttorff  
Bobby Callaway  
Gina Calzaferri  
Marcelo Campos  
Alexandra Carpio  
Katherine Caudle  
Vanessa Cephas  
Greg Ciarlo  
Barrett Cobb  
Charles & Judith Conway \*  
Michael & Connie Cox  
Janet Crino  
Eve Cusick  
Ashley SK Davis  
Sarah Deardorff  
Dawn Dehel  
Debbie Delahant  
Tara DiGiacomo  
Sarah Dobe-Hund  
Judith H. Dolinger  
Jill Downard  
Deanna Dudash  
Keith Dudley  
Edward Dwornik  
Bryant Edwards  
Richard Ekelman  
David Epstein  
Genevieve Fanelli  
MJ Fernbacher  
Julie Fisher  
Gregory & Carla Fiske \*  
Eloise Fox  
Nathalie Freeman  
Claire Frisbie  
Gail Gallagher  
Alan Garfield & Phyllis Rubin  
Elizabeth Getman  
Al & Gwen Gilens  
Adam & Kim Ginsberg  
Marissa Guariano  
Toni Guariano

Shomudro Gupta  
Ilene Guzik  
George Harding  
Sabine Harper  
William Hartt  
James Headley  
Katie Heer  
Lynne Herndon  
CJ Higgins  
Sandra Horne-Verley  
Richard James  
Brandon Jennings  
Danielle Johnson  
Peter Johnson  
James Kern  
Michael Knight  
Cindy Kohlmann  
Bailey Kung  
Jenny Leazer  
Carolyn Lewis  
Camp Loomis  
Heather Lowry  
Kathleen Lyons  
Nicole Macturk  
Shelley Maggiti  
Ellen Malenfant  
John & Debra Martin  
Charles Maurer  
Michael McCann  
Gillian & Shawn McCarren  
Mary McDonald  
Mary Margaret McElduff  
Kelsey McElduff



**302-635-7055**  
**[www.evergreenws.com](http://www.evergreenws.com)**

Rob McMahan  
 Kanina Miller  
 Carlyn Miller  
 Mark Mills  
 Gabrielle Morgan  
 Keri & Michael Morton-Wiedner  
 Lena Mucchetti  
 Brian Murphy  
 Catalina Natalini  
 Devan Neal  
 Juliette Nero  
 Sarah Palm  
 Melissa Parker  
 Kiandra Parks  
 John Patouhas  
 Sara Paulish  
 Chris Payne  
 Robert Potter  
 Larissa Ranbom  
 Paul & Jane Reimold  
 Christopher Renaud  
 Jennifer Rippon  
 Michael Ritchie & E. McCrae-Harrison  
 Calli Rothberg  
 Ewa Rurarz-Huygens  
 Alison Ruth  
 Sarah Ryan  
 Brian & Melinda Salls-Blackstock  
 William Sargent Jr.  
 Joanne Saxon  
 Izzy Sazak  
 Miranda Schad  
 Tay Sconiers  
 George Segeda  
 The Sharps  
 Sheila Shaw  
 Kelli Shermeyer  
 Cindy Skillman

Bethany Slater  
 Julia Smith  
 Madalyn Smith  
 Geoff Snowman  
 Irene Sole  
 Igor Sourotkine  
 Christine Sowinski  
 Cyndi Stouffer  
 John Stucker  
 Evan Szarenski  
 Kathy Thompson  
 Mei Tobin  
 Janet Torsney  
 Eve Trojanov  
 Terence Tuhinanshu  
 Marlee Tuomanen  
 Orelí Uzdavinis & Juan De León  
 Joseph Verano  
 Mary Vassalo  
 Miguel Vega-Sanchez  
 Tai Verley  
 Anthony Vinci  
 Susan Warzel  
 Christopher B. Waters  
 Lisa Watson-Hill  
 Yulia Watters  
 Beatrice Webb  
 Bob Weick  
 Johnny Weiss  
 Barr Weissman  
 Linda P. White  
 Jon & Barbara Wiechecki  
 Nick & Wendy Wilkinson  
 Nancy Wingate \*  
 William Wood  
 Gail Wynn  
 Emma Yalisov



## Special Thanks

To all our friends at Delaware Art Museum, Delaware Botanic Gardens, Delaware Historical Society, Delaware Theatre Company, Friends of Fort DuPont, Janssen's Market, New Castle County, New Light Theatre, Old-Fashioned Ice Cream Festival, OperaDelaware, Out & About, Philadelphia Artists' Collective, Resident Ensemble Players - University of Delaware, Delaware Symphony Orchestra, Hagley Museum, City Theater Company, Clear Space Theatre Company, Wilmington Brew Works, People's Light, and Salesianum Drama Department.

And also to Suzanne Casey, Julie Gray, Ryan Grover, Joan Hamilton, Dena Kirk, David Stradley, Matt Sullivan, Jane Rattenni, Marina Rosaio-Roddy, Julie and Jonathan Russ, and Loretta Spigel.

# Antiracism

---

Delaware Shakespeare is committed to a work and audience environment in which all individuals are treated with respect and dignity. Delaware Shakespeare expects that all persons working, performing, attending, or otherwise conducting business connected to our activities will strive to be free of racial bias and prejudice, and be committed to eliminating racial harassment or racial transgressions. We reject all forms of racism as destructive to our mission, vision, values, and goals. We will pursue ongoing antiracism dialogue so that all can continue to grow.

# Land Acknowledgment

---

Delaware Shakespeare performs on the traditional lands of the Lenni-Lenape people. We acknowledge them as the original stewards of this land. Del Shakes aims to bring our community together to explore our shared humanity. During today's performance, we invite you to consider how your humanity is interlinked with that of the Lenape people.

# Barrymore Awards

---

Delaware Shakespeare is a proud participant in Theatre Philadelphia's Barrymore Awards program. The Barrymore Awards recognize professional theatre in the Greater Philadelphia region, honor local artists and theatre companies, and increase public awareness of the richness and diversity of our region's thriving theatre community.

Learn more at [theatrephiladelphia.org](http://theatrephiladelphia.org).

# Relaxed Performance (July 27)

---

Relaxed Performances provide a welcoming, "shush-free" environment that lets all patrons attend the performance and express themselves freely, without judgment or inhibition. This live theatre experience invites and encourages individuals with autism, ADD, ADHD, dementia, sensory sensitivities, medically complexities, physical accessibility needs, and anyone else who would appreciate a more relaxed theatre-going environment to enjoy the performance.

We encourage everyone to bring their full, authentic selves to these performances, with the knowledge that there may be a certain level of sound and/or movement in the audience during the performance.

As our show is performed outdoors, there is already an inherent amount of freedom for folks to move about and express themselves as needed, but even more so at these relaxed performances are audience members free to talk, vocalize, and leave seats during the performance as needed.

Please reach out to [boxoffice@delshakes.org](mailto:boxoffice@delshakes.org) if you have any questions.



# RIVERFRONT MINISTRIES

**Riverfront Ministries is a faith-based community in Wilmington, DE.**

We gather Mondays at 5:30 PM at The Chancery Market and monthly on Sundays at 5:05 PM at rotating locations.

**We are dedicated to food and economic justice.**

We provide business support and culinary kitchen space to entrepreneurs via the Wilmington Kitchen Collective.

**Contact us:**

@riverfront\_ministries

[www.riverfrontministries.org](http://www.riverfrontministries.org)



WILMINGTON  
*Kitchen*  
COLLECTIVE

@wilmingtonkitchencollective



DELAWARE  
THEATRE  
COMPANY

SEASON 25/26

### SEPTEMBER 17–OCTOBER 5

WORLD PREMIERE!

#### SPINNER

WRITTEN BY RAY DIDINGER DIRECTED BY MATT SILVA

A gripping true story of NHL player Brian “Spinner” Spencer, whose pursuit of greatness leads to personal tragedy. This world premiere by sportswriter Ray Didingar explores the cost of obsession and the fragility of dreams.



### OCTOBER 22–NOVEMBER 9

WRITTEN AND DIRECTED BY LAYON GRAY

Set in 1946, this Layon Gray drama follows the Red Diamonds, an all-Black women’s baseball team, as they face betrayal and mystery before a historic game. A powerful story of ambition, secrets, and resilience.



### DECEMBER 3–21

BOOK AND LYRICS BY DAVID LINDSAY–ABAIRE MUSIC BY JEANINE TESORI

A WOLF PERFORMING ARTS CENTER PRODUCTION PRESENTED BY DELAWARE THEATRE COMPANY

A family-friendly musical celebrating self-acceptance and community! Based on the beloved DreamWorks film it’s a joyful holiday production for all ages.



### FEBRUARY 18–MARCH 8

U.S. PREMIERE!

BOOK BY VICTORIA AND TODD BUCHHOLZ

MUSIC AND LYRICS BY VICTORIA BUCHHOLZ

This U.S. premiere tells the true story of Gino Bartali, a Tour de France champion who secretly helped save lives during WWII. A stirring musical of courage and resistance, set against the backdrop of Fascist Italy.



### APRIL 15–MAY 3

WORLD PREMIERE!

STORY BY JACK DENMAN, EYAKENO EKPO, SELENA SEBALLO, & MIMI WARNICK

BOOK AND LYRICS BY  
SELENA SEBALLO

MUSIC BY  
JACK DENMAN

DIRECTED & CONCEIVED BY  
MIMI WARNICK

Set against the sound of sea shanties, The Chequerboard Watch follows a crew whose voyage turns perilous when their captain defies the sea, forcing them to unite through song, struggle, and shared humanity.

CALL OR VISIT  
**SUBSCRIBE TODAY!**

302.594.1100  
DELAWARETHEATRE.ORG



1601 CONCORD PIKE  
WILMINGTON, DE 19803

SWIGGWINE.COM

# Practical Matters

---

## Accessibility

The Delaware Shakespeare Summer Festival is wheelchair accessible. Accessible restrooms are available.

## Bugs

Our grounds are sprayed with an all-natural mosquito repellant during Summer Festival weeks. For added protection, feel free to use the mosquito spray at one of our complimentary stations.

## Cameras

Cameras and recording devices – yes, including cell phones – are strictly prohibited during the show. Feel free to snap away during pre-show entertainment and at intermission. And we love to see your photos! We use #delshakes.

## Cell Phones

Please silence your cell phones during the performance.

## Concessions

Our concession stand sells souvenir t-shirts, light refreshments, wine by the bottle at the Swigg Festival Wine Shop, and picnic food from Janssen's Market.

## Feedback

We love to hear your thoughts and suggestions. Contact us at [info@delshakes.org](mailto:info@delshakes.org) or at [Facebook.com/delshakes](https://www.facebook.com/delshakes).

## Need help?

If at any time you have a question or need help, ask to see a staff member at our concession tent.

## Pets

Sorry, no animals are permitted on the Festival grounds (except for specially-trained service animals).

## Recycle Programs

If you like this program, please keep it – or you can return it to us at the concessions tent as you leave the park.

## Restrooms

Follow signs to the restrooms beyond the gazebo, at the opposite end of the lawn from the mansion.

## Safety

Please do not enter backstage areas during the production, and keep aisles clear for actors during the show.

## Seating

Seating begins at the stage with blanket seating, followed by low-back “beach” chairs and high-back “lawn” chairs. We kindly request you follow the advice and guidance of our volunteer ushers as they try to create a space where everyone can see.

## Smoking

Smoking is prohibited everywhere on the grounds of the Summer Festival.

## Weather

Performances continue in a light rain. In heavy rain, staff may call a 20-minute rain delay. If it is not possible to continue, the performance will be cancelled and rain checks are issued to all audience members. Lightning strikes within 10 miles of the park will result in the immediate cancellation of a performance.

## Please Note

Delaware Shakespeare and Rockwood Park/ New Castle County are not liable for any damages including, without limitation, direct, indirect, incidental, special, punitive, consequential or similar damages related to the use or misuse of alcohol during or after a performance.

# DEL delaware ART art MUSEUM museum

2301 Kentmere Parkway  
Wilmington, DE 19806  
302.571.9590 | delart.org



**DelArt's Sculpture Garden Happy Hours**  
are vibrant, laid-back evenings that combine  
live entertainment with a casual and  
social atmosphere.



**THURSDAYS,  
MAY 22–SEPTEMBER 18  
5–7:30 PM**

